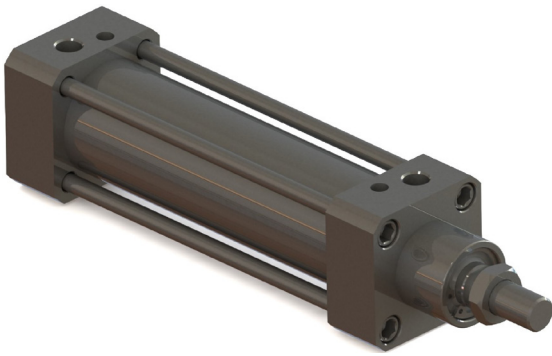




PRS-A SERIES

2019 CATALOGUE

 **Pemaks**[®]
Pneumatics
pemaks.com.tr

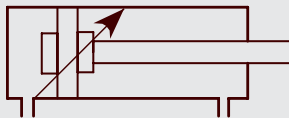


PRS-A SERIES

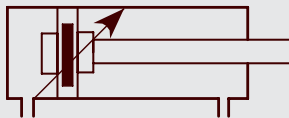
ISO 15552 - Ø32 - Ø125

COMPLETELY STAINLESS STEEL
MAGNETIC AND CUSHIONING CYLINDER

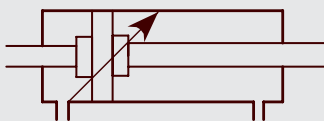
STAINLESS STEEL BODY PROVIDES
HIGH CORROSION RESISTANCE AND
LONG LIFE IN CHALLENGING CONDITIONS.



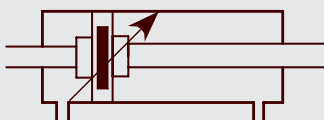
PRS: DOUBLE ACTING AND CUSHIONING CYLINDER



PRS-A: DOUBLE ACTING, CUSHIONING AND MAGNETIC CYLINDER



PRS-D: DOUBLE ACTING, CUSHIONING AND DOUBLE ROD CYLINDER



PRS-AD: DOUBLE ACTING, CUSHIONING, MAGNETIC AND DOUBLE ROD CYLINDER

Cushioning is standard on these products.

Force value:

Cylinder Ø mm	Rod Ø mm	Thrust and Traction forces (6 bar)	
		Thrust force (N)	Traction force (N)
32	12	482	415
40	16	754	633
50	20	1178	990
63	20	1870	1682
80	25	3016	2721
100	25	4712	4418
125	32	7363	6881

Example of order:

PRS-A 050-0100 K4
 Product Code Cylinder Ø Stroke Non-Standard Variations

Non-Standard variations:

- M1: Extended male thread on cylinder rod
- M2: Female piston rod thread
- M3: Special thread on rod
- M4: Extended piston rod
- K1: Max. 150°C sealing parts (Viton)
- K4: Rod seal viton

Working fluid:

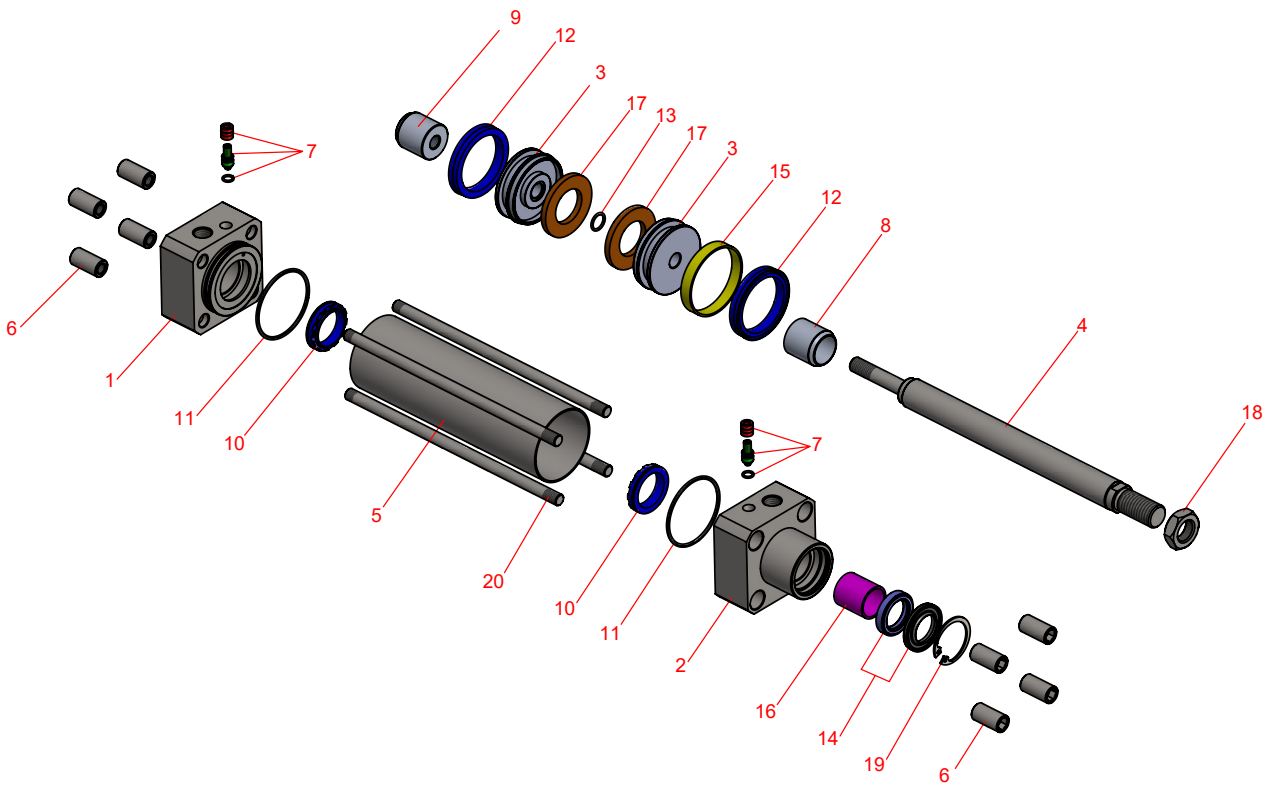
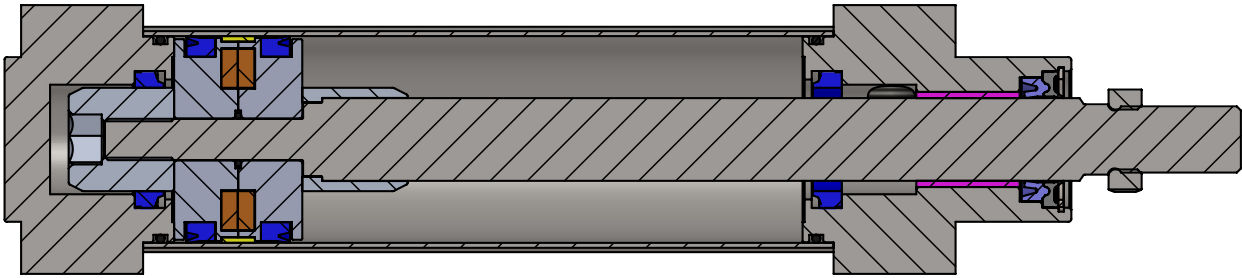
Filtered and lubricated or filtered and not lubricated air.

Operating temperature range:

Polyurethane (PU) : (-20°C) - (+80°C)
 Viton (FKM) : (-30°C) - (+150°C)

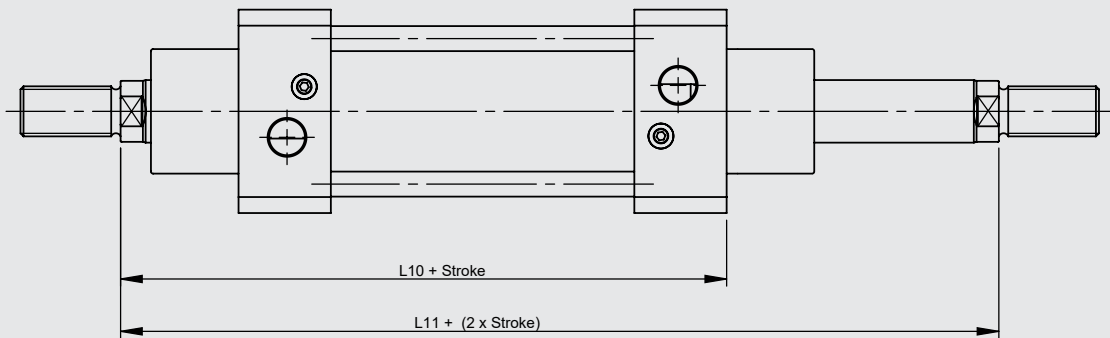
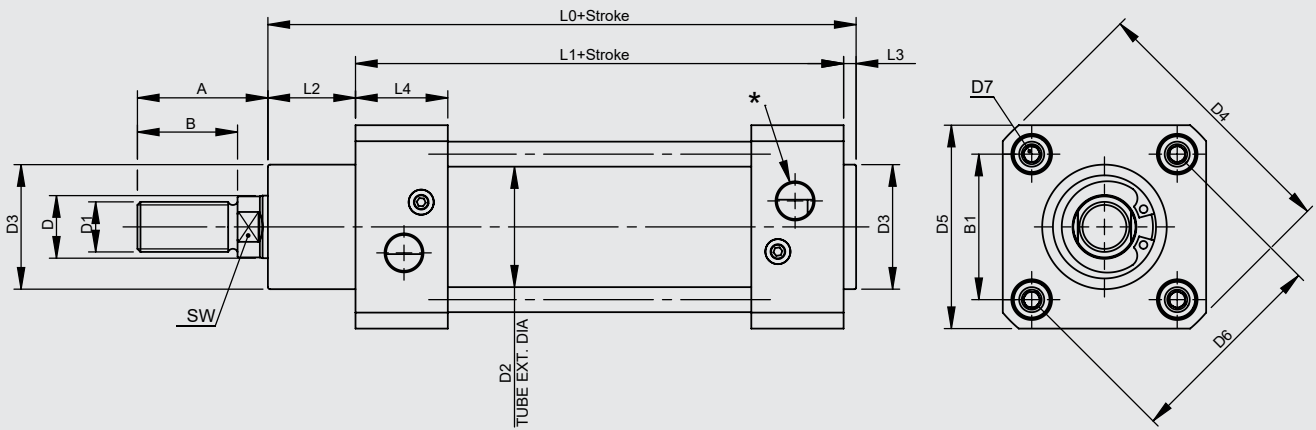
Max. work pressure:

10 Bar



No	Part Name	Material Properties	Pc.
1	Rear Head	SS 304-SS 316	1
2	Front Head	SS 304-SS 316	1
3	Middle Piston	Aluminium	2
4	Piston Rod	SS 316	1
5	Tube	SS 304-SS 316	1
6	Bolt	SS 304-SS 316	8
7	Cushioning Screw	Brass + AISI 303 NBR	2
8	Cushioning Tube	Aluminium+Eloxal Plated	1
9	Cushioning Fem. Thread	Aluminium+Eloxal Plated	1
10	Cushioning Seal	PU	2

No	Part Name	Material Properties	Pc.
11	Head O-ring	NBR	2
12	Piston Seal	PU	2
13	Middle Piston O-ring	NBR	1
14	Rod Seal	PU85 + POM	1
15	Guiding Band	Polyacetal	1
16	Guiding Bush	CSB-40	1
17	Magnet		2
18	Nut	SS 304-SS 316	1
19	Retaining Ring	A2 Stainless Steel	1
20	Tie Rod	SS 304-SS 316	4



Cylinder Ø mm	A	B	B1	D Ø	D1	D2 Ø	D3 Ø	D4	D5	D6 Ø	D7	L0	L1	L2	L3	L4	L10	L11	SW	*
32	30	22	32.5	12	M10x1.25	33,6	30	59	45	46	M6	116	94	18	4	25	120	146	10	G1/8"
40	34	24	38	16	M12x1.25	41,6	35	70,2	54	53,7	M6	129	105	20	4	27	135	165	13	G1/4"
50	41	32	46.5	20	M16x1.5	52,4	40	84,2	65	65,7	M8	138	106	28	4	29,5	143	180	17	G1/4"
63	42	32	56.5	20	M16x1.5	65,4	45	99,5	76	80	M8	152	121	27	4	34,5	158	195	17	G3/8"
80	52	40	72	25	M20x1.5	86	45	123,8	94	101,8	M10	167	128	34	4	35	174	220	22	G3/8"
100	52.5	40	89	25	M20x1.5	106	55	148,8	112	125,9	M10	182,5	138	38,5	4	38	189	240	22	G1/2"
125	73	54	110	32	M27x2	133	60	179,5	134	155,5	M12	213	160	46	6	44	225	290	27	G1/2"

Dudullu OSB Mahallesi İMES-102. Sok. A Blok No:11/15 Ümraniye / İstanbul / Turkey
Tel: +90 216 364 3076 pbx - Fax: +90 216 466 6305
www.pemaks.com.tr - pemaks@pemaks.com.tr

