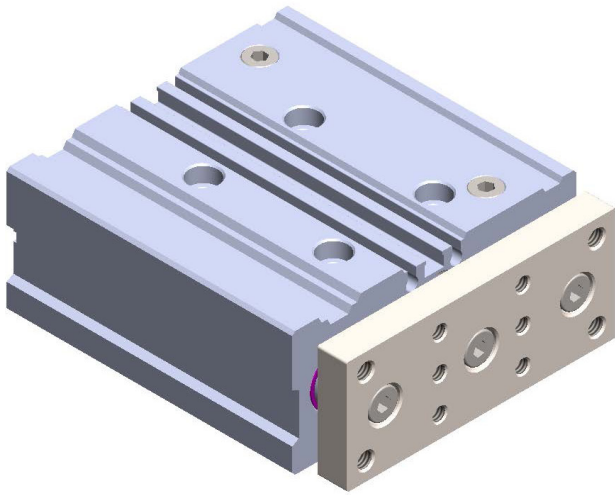


PGB SERIES

**2019** CATALOGUE

 **Pemaks**<sup>®</sup>  
Pneumatics  
pemaks.com.tr

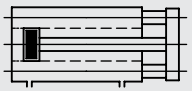


**PGB SERIES**

TWIN GUIDE CYLINDERS, - Ø12 - Ø63

DOUBLE ACTING CYLINDER WITH MAGNETIC

*HEAVY-DUTY AND SENSITIVE ALUMINUM BODY EXCELLENT GUIDING, MOVEMENT AND POSITIONING FUNCTION DURABILITY FOR TORQUE AND LATERAL FORCES WIDE APPLICATION AREA*



**PGB:** TWIN GUIDE DOUBLE ACTING CYLINDER WITH MAGNETIC

**Example of order:**

PGB                      032-025  
 Product Code            ØCylinder-Stroke

**Force:**

Cylinder Ø mm	Rod Ø mm	Thrust and traction forces (6 bar)	
		Thrust Force (N)	Traction Force (N)
12	6	68	51
16	8	121	91
20	10	188	142
25	12	295	227
32	16	482	362
40	16	754	634
50	20	1178	990
63	20	1870	1682

**Working Fluid:**

Filtered and lubricated or filtered and not lubricated air.

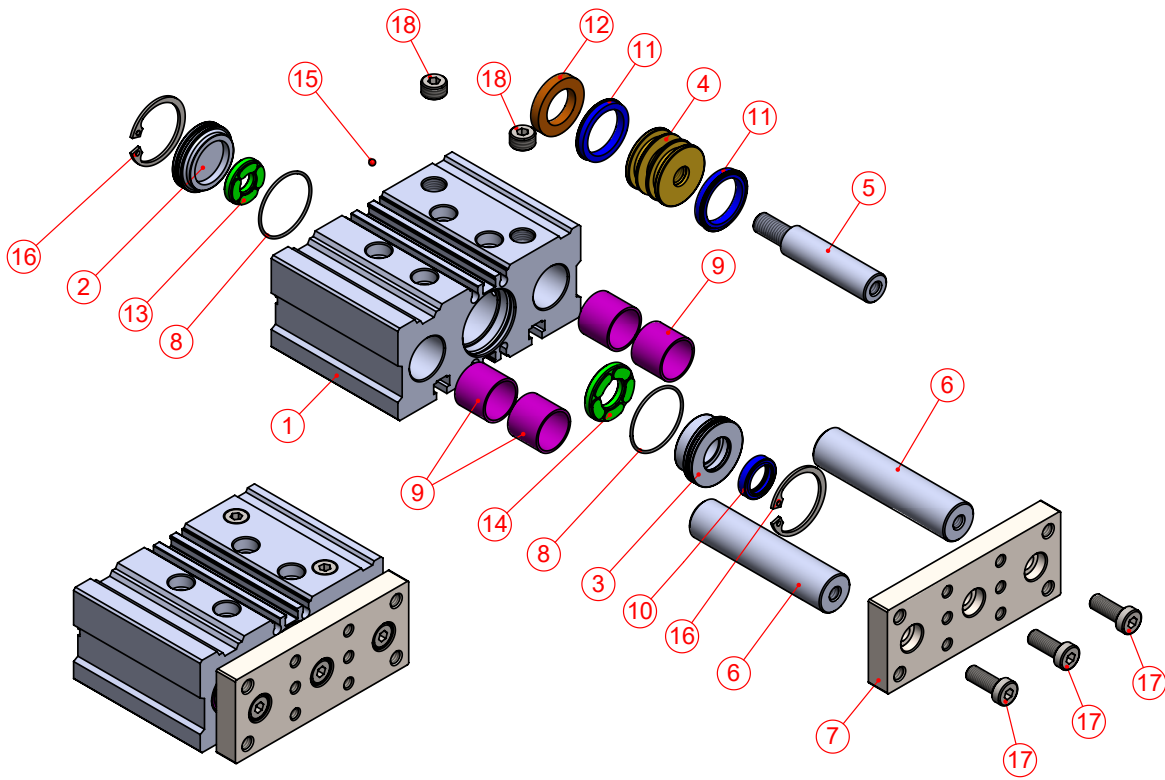
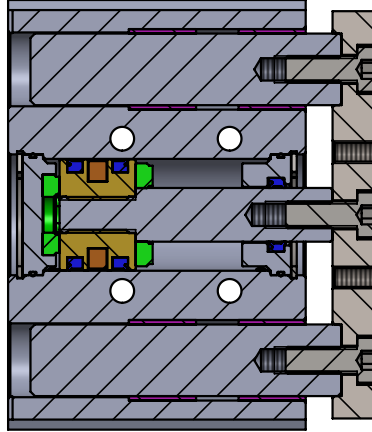
**Operating Temperature Range:**

Polyurethane (PU): -20 C...+80 C

**Max. Work Pressure:**

10 Bar

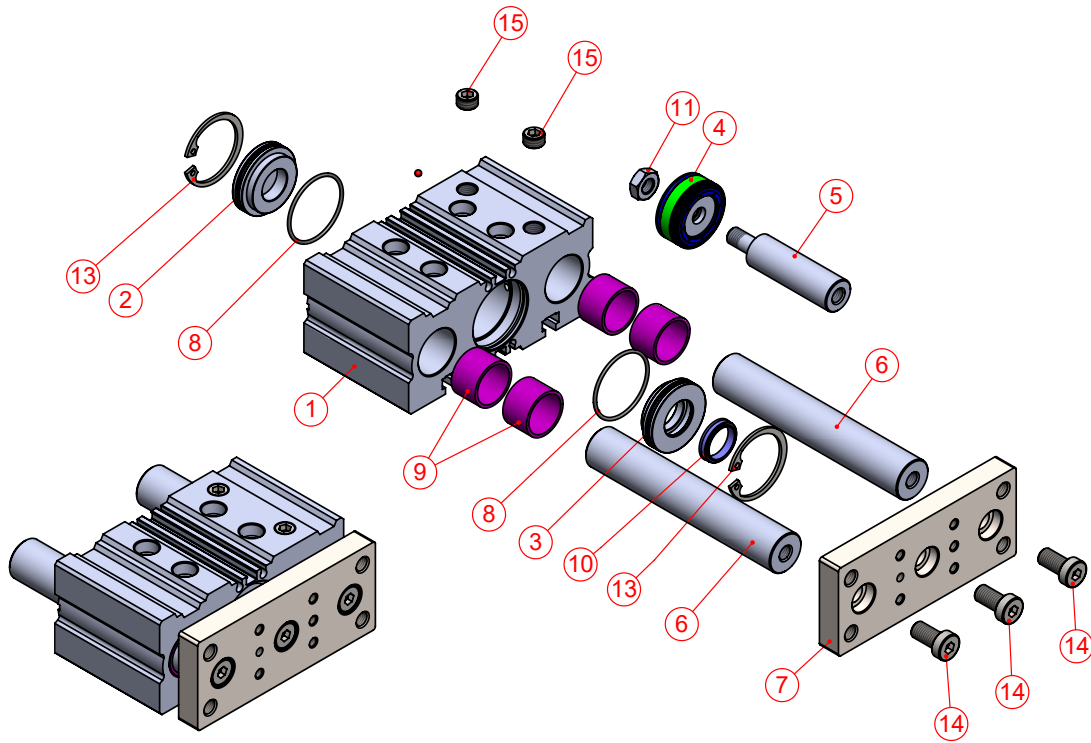
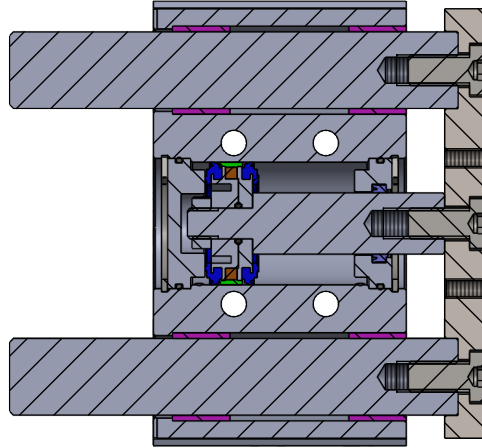
**TWIN GUIDE CYLINDERS - Ø12 - Ø25**



No	Material Name	Characteristic	Pc
1	CYLINDER BODY	AL.+ELOXAL PLATED	1
2	REAR HEAD	6082 AL.+ELOXAL PLATED	1
3	FRONT HEAD	6082 AL.+ELOXAL PLATED	1
4	MIDDLE PISTON	BRASS	1
5	PISTON ROD	STAINLESS STEEL	1
6	GUIDE ROD	STAINLESS STEEL	2
7	FLANGE MOUNTING	C45 STEEL+CHROME NI. PLT.	1
8	HEAD O-RING	NBR	2
9	GUIDING BUSH	CSB-40	4
10	ROD SEAL	PU	1
11	PISTON SEAL	PU	2

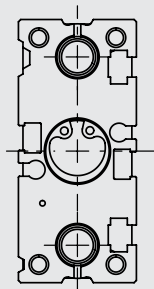
No	Material Name	Characteristic	Pc
12	MAGNET		1
13	REAR BUMPER	PU 85	1
14	FRONT BUMPER	PU 85	1
15	BALL	STAINLESS STEEL	1
16	RETAINING RING	STEEL	2
17	BOLT	GALVANIZED STEEL	3
18	BLIND RECORD	GALVANIZED STEEL	2

TWIN GUIDE CYLINDERS - Ø32 - Ø63

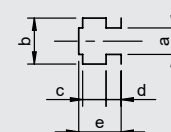
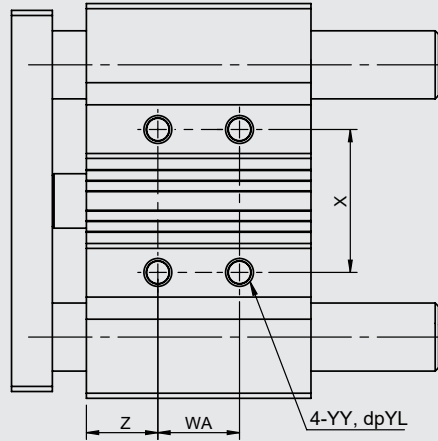


No	Material Name	Characteristic	Pc
1	CYLINDER BODY	AL.+ELOXAL PLATED	1
2	REAR HEAD	6082 AL.+ELOXAL PLATED	1
3	FRONT HEAD	6082 AL.+ELOXAL PLATED	1
4	MIDDLE PISTON	PU+AL.+POM+MAGNET	1
5	PISTON ROD	X20Cr13+HARD CHROME PLT.	1
6	GUIDE ROD	CK45+HARD CHROME PLATED	2
7	FLANGE MOUNTING	C45 STEEL+CHROME NI. PLT.	1
8	HEAD O-RING	NBR	2
9	GUIDING BUSH	CSB-40	4
10	ROD SEAL	PU	1

No	Material Name	Characteristic	Pc
11	NUT	GALVANIZED STEEL	1
12	BALL	STAINLESS STEEL	1
13	RETAINING RING	STEEL	2
14	BOLT	GALVANIZED STEEL	3
15	BLIND RECORD	GALVANIZED STEEL	2

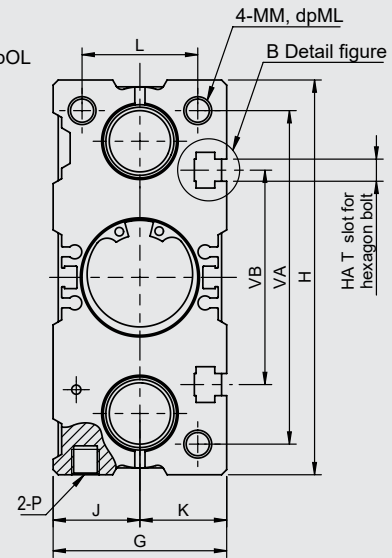
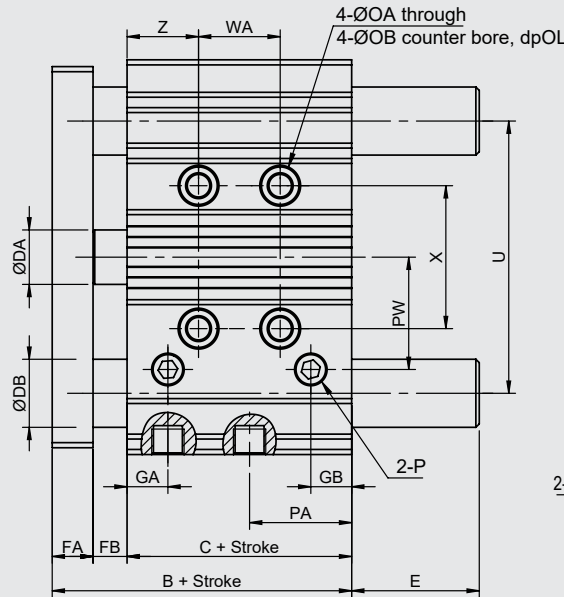
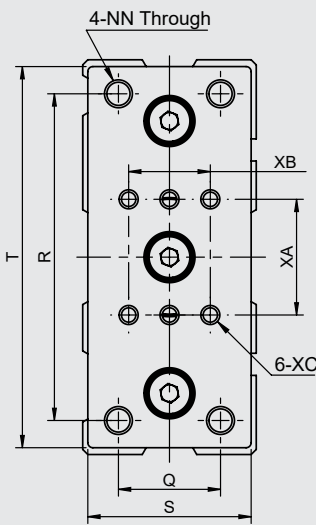


Ø12 - Ø20 View



B Detail figure

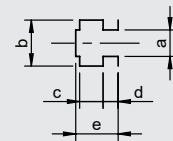
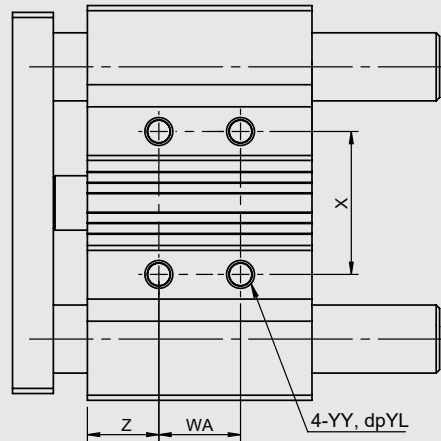
Cylinder Ømm	a	b	c	d	e
12	4.4	7.4	3.7	2	6.2
16	4.4	7.4	3.7	2.5	6.7
20	5.4	8.4	4.5	2.8	7.8
25	5.4	8.4	4.5	3	8.2



Cylinder Ø mm	B	C	DA	FA	FB	G	GA	GB	H	HA	J	K	L	MM	ML	NN	OA	OB	OL	P	PA	PB	PW
12	54	41	6	8	5	26	14	9	58	M4	13	13	17	M4	8	M4	4.2	8	4.5	M5	15	7.7	11.5
16	57.5	44.5	8	10	3	30	14	9	64	M4	15	15	21	M5	10	M5	4.2	8	4.5	M5	16.5	9.7	12
20	58.5	43.5	10	10	5	36	9.5	9.5	85	M5	18	18	24	M5	13	M5	5.2	9.5	5.5	G1/8"	23	9.5	23
25	62.5	46.5	12	10	6	42	10	10	96	M5	21	21	30	M6	15	M6	5.2	9.5	5.5	G1/8"	25	12.5	27.5

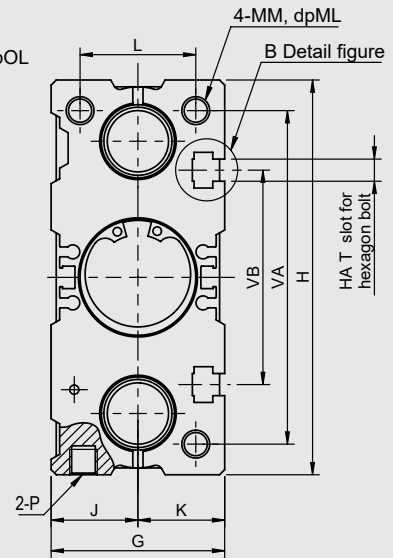
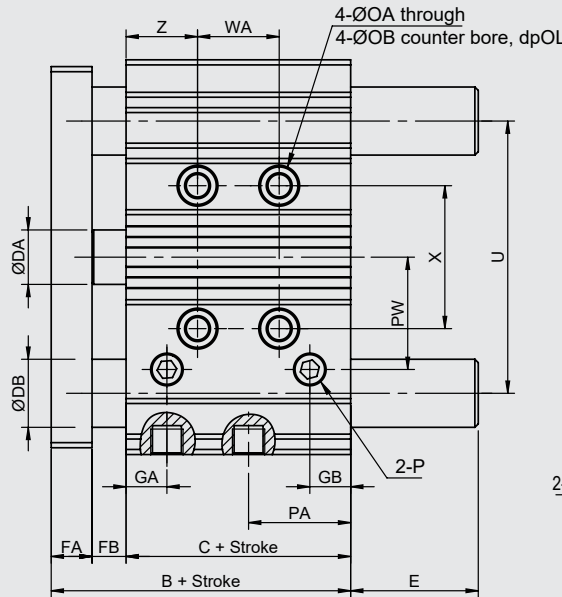
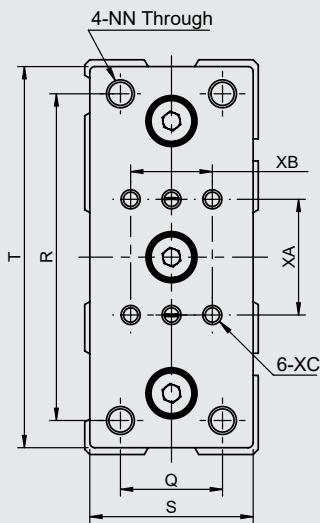
Cylinder Ø mm	Q	R	S	T	U	VA	VB	WA					X	XA	XB	XC	YY	YL	Z
								30st or less	Over 30st to 100st	Over 100st to 200st	Over 200st to 300st	Over 300st							
12	14	48	24	56	41.5	50	37	20	40	110	200	-	23	23	14	M4	M5	10	5
16	16	52	28	62	46	56	38	24	44	110	200	-	24	23	20	M4	M5	10	5
20	18	70	33	81	55	72	44	24	44	120	200	300	28	24	24	M4	M6	12	18
25	26	78	38	91	65	82	50	24	44	120	200	300	34	28	24	M5	M6	12	17

Cylinder Ø mm	Standard Stroke (mm)	DB	E				
			50st or less	Over 50st to 100st	Over 100st	Over 50st to 200st	Over 200st
12	10, 20, 25, 30, 40, 50, 80, 100	8	0	18.5	43		
16		10	0	18.5	49		
20	20, 25, 30, 40, 50, 80, 100	12	0			31.5	69
25		16	0			31.5	68.5



B Detail figure

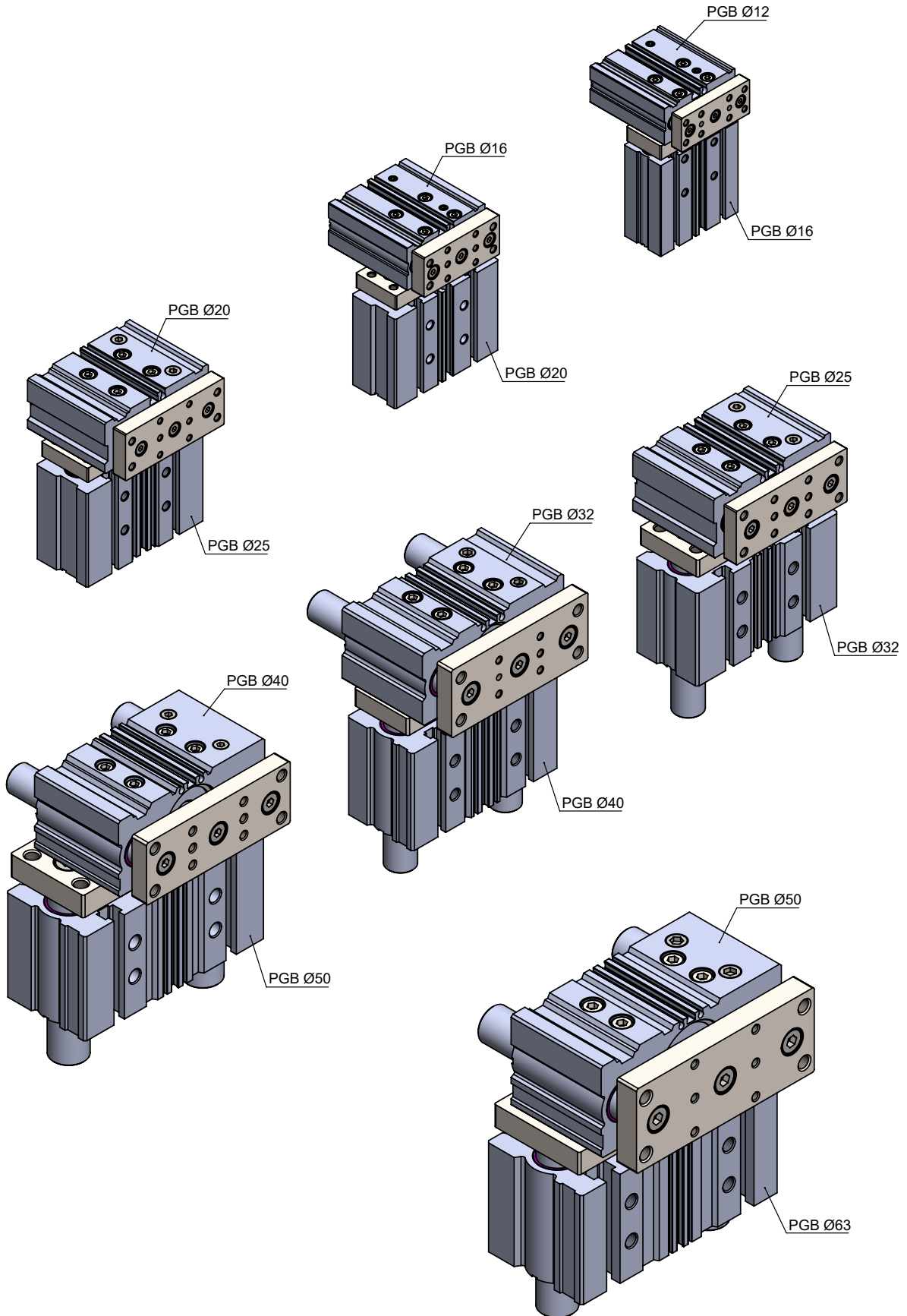
Cylinder Ømm	a	b	c	d	e
32	6.5	10.5	5.5	3.5	9.5
40	6.5	10.5	5.5	4	11
50	8.5	13.5	7.5	4.5	13.5
63	11	17.8	10	7	18.5

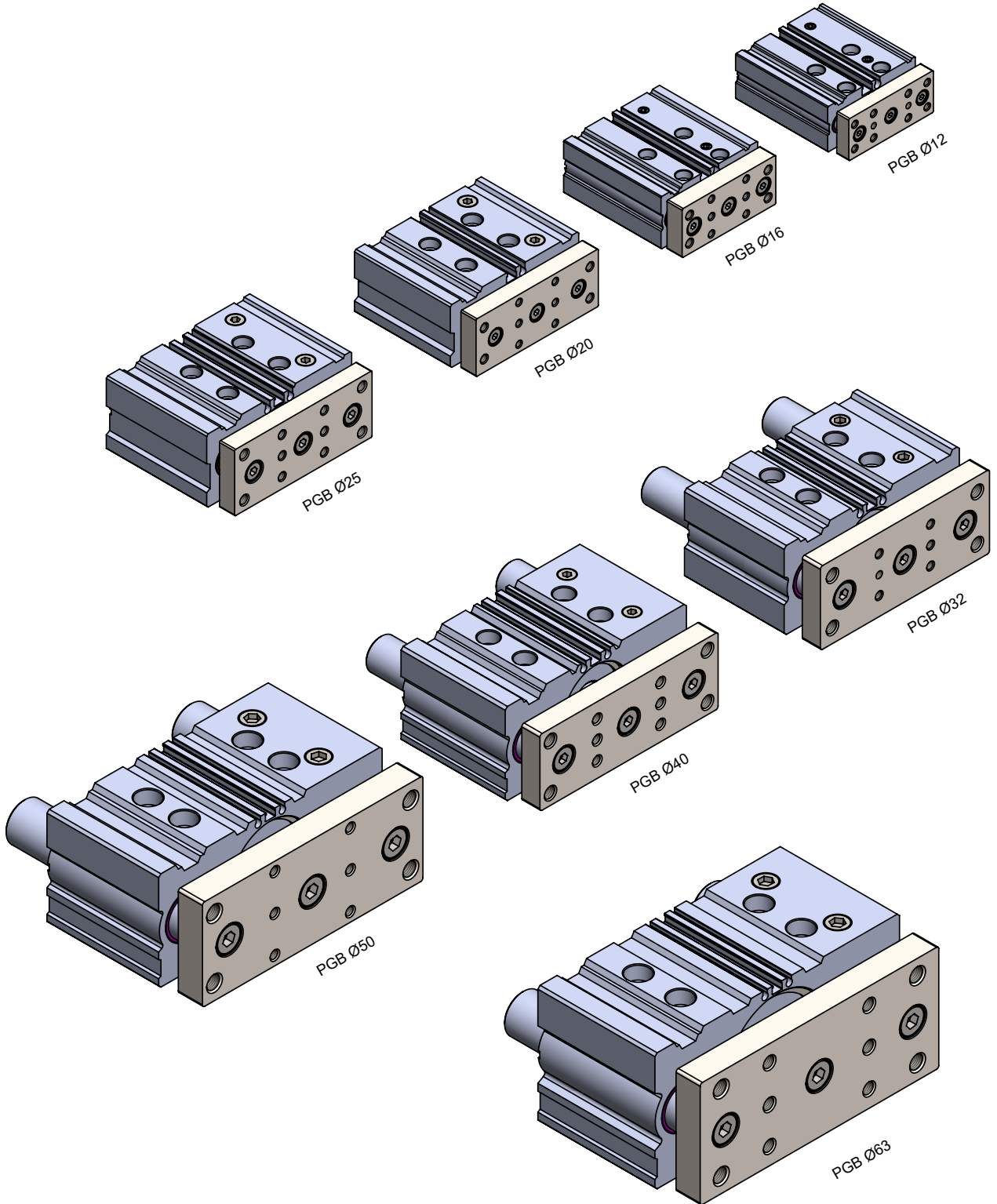


Cylinder Ø mm	B	C	DA	FA	FB	G	GA	GB	H	HA	J	K	L	MM	ML	NN	OA	OB	OL	P	PA	PB	PW
32	63	41	16	12	10	51	12	12	116	M6	25.5	25.5	34	M8	18	M8	6.7	11	6.5	G1/8"	30	16	33
40	66	44	16	12	10	54	13	13	120	M6	27	27	40	M8	20	M8	6.7	11	7.5	G1/8"	31	18	37
50	77	49	20	16	12	65	15	15	148	M8	32.5	32.5	46	M10	22	M10	8.4	14	9	G1/4"	36	21.5	47
63	80.5	52.5	20	16	12	78	15	15	162	M10	39	39	58	M10	22	M10	8.4	14	9	G1/4"	38.5	28	55

Cylinder Ø mm	Q	R	S	T	U	VA	VB	WA					X	XA	XB	XC	YY	YL	Z
								25st or less	Over 25st to 100st	Over 100st to 200st	Over 200st to 300st	Over 300st							
32	30	96	48	112	80	98	63	24	48	124	200	300	42	34	24	M5	M8	16	21
40	30	104	44	118	86	106	72	24	48	124	200	300	50	42	24	M6	M8	16	22
50	40	130	60	146	110	130	92	24	48	124	200	300	66	50	48	M6	M10	20	24
63	50	130	70	158	124	142	110	28	52	128	200	300	80	66	48	M8	M10	20	24

Cylinder Ø mm	Standard Stroke (mm)	DB	E		
			50st or less	Over 50st to 200st	Over 200st
32	25, 30, 40, 50, 80, 100, 125, 150, 160, 200	20	37.5	42.5	80.5
40		20	31	36	74
50		25	34.5	46	89
63		25	29.5	41	84







Dudullu OSB Mahallesi İMES-102. Sok. A Blok No:11/15 Ümraniye / İstanbul / Turkey  
Tel: +90 216 364 3076 pbx - Fax: +90 216 466 6305  
[www.pemaks.com.tr](http://www.pemaks.com.tr) - [pemaks@pemaks.com.tr](mailto:pemaks@pemaks.com.tr)

