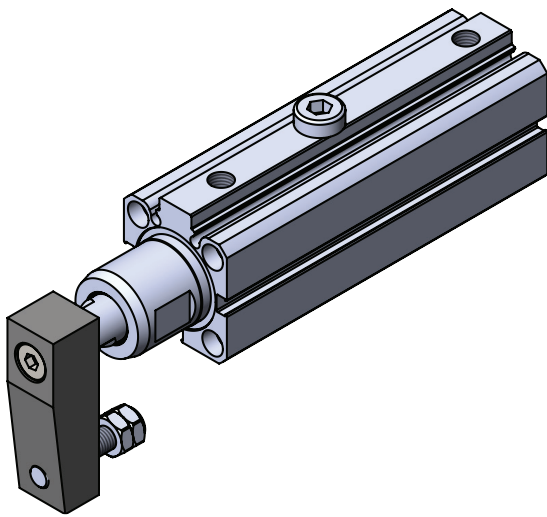




PDK, PDK-M SERIES

**2019** CATALOGUE

 **Pemaks**<sup>®</sup>  
Pneumatics  
pemaks.com.tr

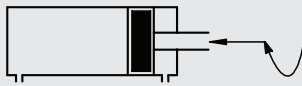


**PDK SERIES**

LINEAR-SWIVEL CLAMP CYLINDERS Ø20 - Ø50

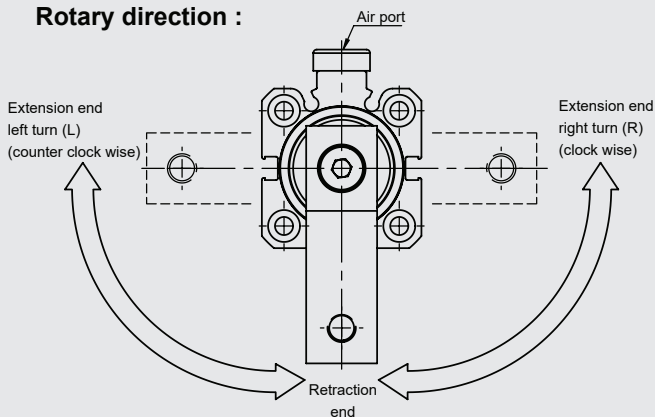
DOUBLE ACTING CYLINDER WITH MAGNETIC AND LINEAR-SWIVEL

COMPACT AND LIGHTWEIGHT BODY. ROTATION AND CLAMPING IN ONE CYLINDER. ROTATION DIRECTION MANUAL RIGHT OR LEFT CAN BE CHANGED AS REQUESTED. THE SENSOR CAN FREELY MOUNTED THE FOUR SIDES. EASY TO MONTAGE. WIDE APPLICATION AREAS.



**PDK: DOUBLE ACTING CYLINDER WITH MAGNETIC AND LINEAR-SWIVEL**

**Rotary direction :**



**Example of order:**

PDK                      32-25+19  
 Product code    ØCylinder-Linear stroke+Swivel stroke

**Variants from standard system:**

- R1: Stainless Steel Piston Rod (SS 304, SS 316)
- M4: Extended Piston Rod
- K1: Seals for Maks. 150 C (viton)
- K4: Piston Rod Seal (viton)

**Working fluid:**

Filtered and lubricated or filtered and not lubricated air.

**Operating temperature range:**

Polyurethane (PU) : -20°C.....+80°C  
 Viton (FKM)            : (-30°C) - (+150°C)

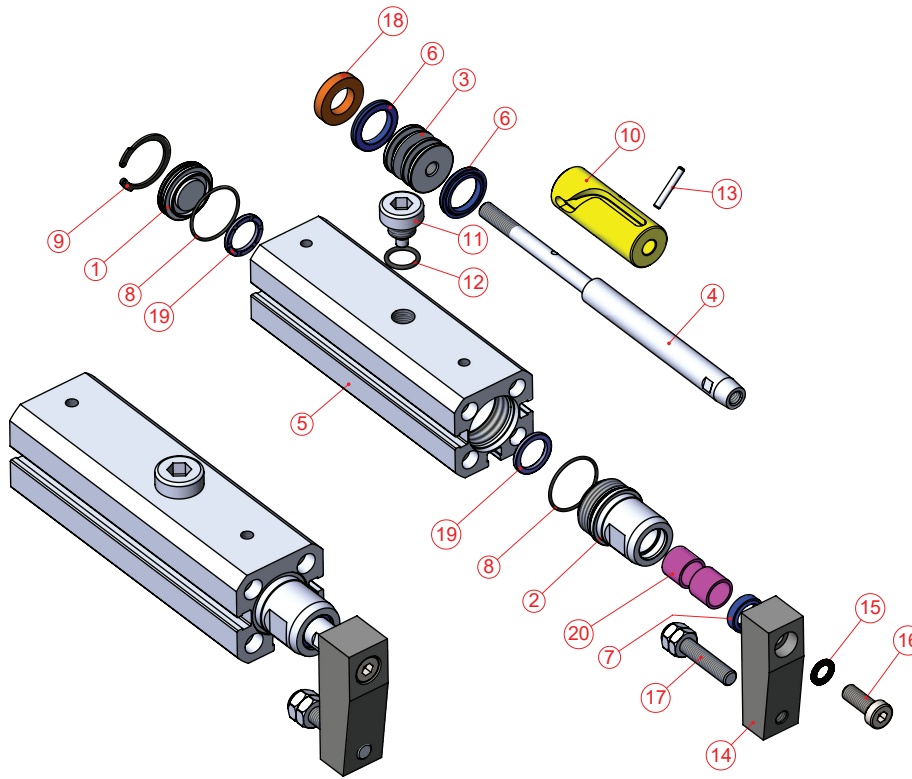
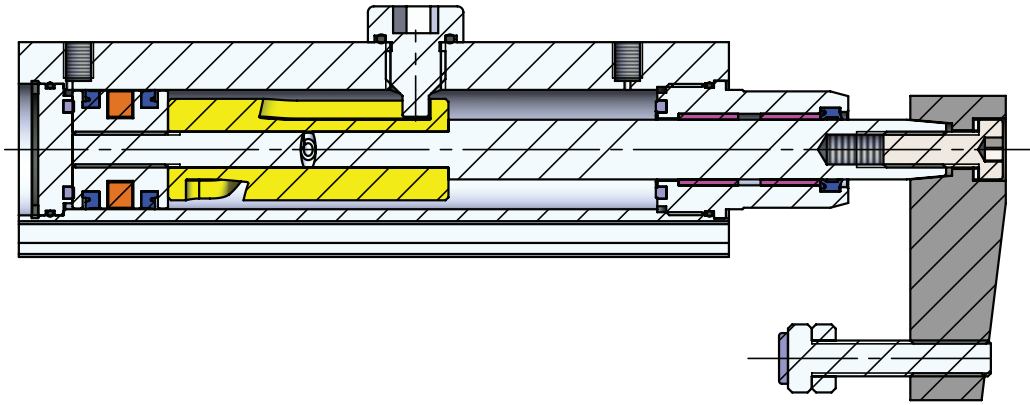
**Max. work pressure:**

10 Bar

**Force:**

Cylinder Ø mm	Rod Ø mm	6 bar		2 bar	4 bar	6 bar
		Clamping without arm		Clamping with arm		
		Thrust Force (N)	Traction Force (N)	Effective clamping force at (N)		
20	10	170	127	35	73	109
25	12	265	227	63	127	188
32	16	482	362	111	216	313
40	16	754	633	176	355	536
50	20	1178	990	271	508	716

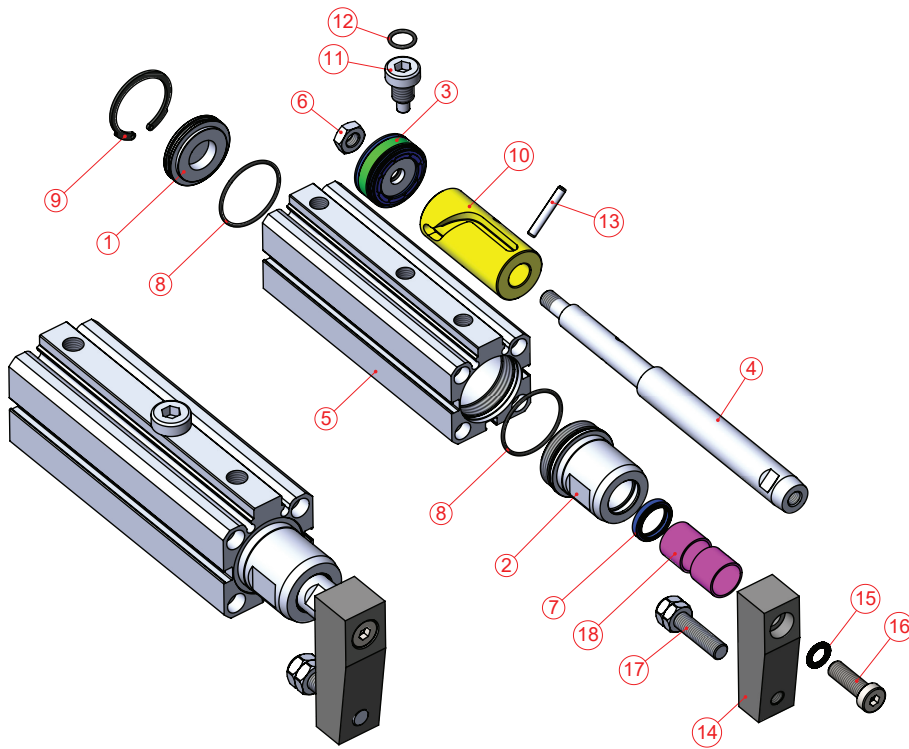
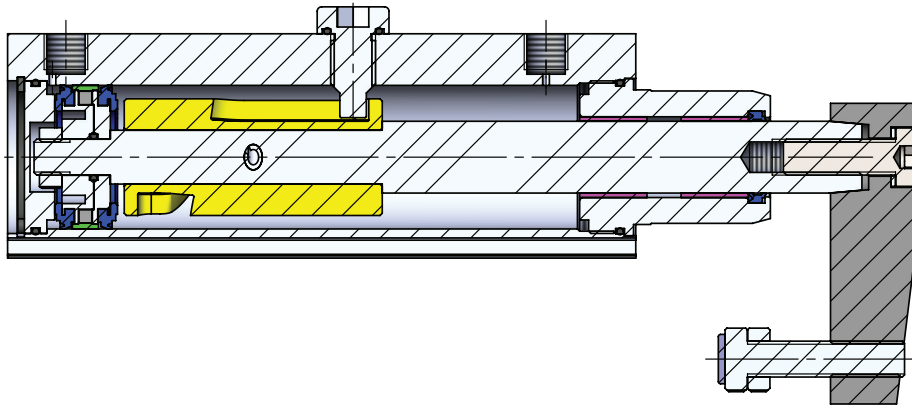
LINEAR-SWIVEL CLAMP CYLINDER - Ø20, Ø25



No	Material name	Characteristic	Pc
1	Rear Head	Bronze	1
2	Front Head	6082 Al.+Eloxal Plated	1
3	Middle Piston	Brass	1
4	Piston Rod	X20Cr13 Hard Chrome Plated	1
5	Tube	AlMgSi0.5+Eloxal Plated	1
6	Piston Seal	PU	2
7	Rod Seal	PU	1
8	Head O-ring	NBR	2
9	Retaining Ring	Steel	1
10	Rotary Guide	Delrin	1

No	Material name	Characteristic	Pc
11	Guide Bolt	Galvanized Steel	1
12	O-Ring	NBR	1
13	Pin	Steel	1
14	Clamping Arm	Steel	1
15	Spring Washer	AISI 304	1
16	Bolt	Galvanized Steel	1
17	Bolt	SS304 + Teflon	1
18	Magnet		1
19	Bumper	PU 90	2
20	Guiding Bush	CSB-40	2

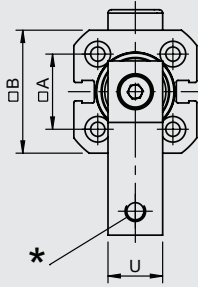
LINEAR-SWIVEL CLAMP CYLINDER - Ø32, Ø40, Ø50



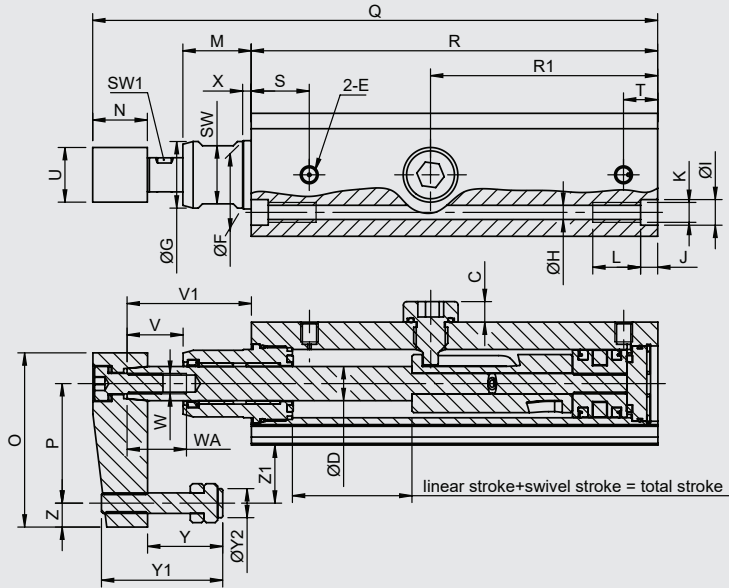
No	Material name	Characteristic	Pc
1	Rear Head	For Ø32 Cyl., Bronze	1
		For Ø40, Ø50 Cyl., 6082 Al.+Eloxal Plated	1
2	Front Head	6082 Al.+ Eloxal Plated	1
3	Middle Piston	PU+Al.+POM+Magnet	1
4	Piston Rod	X20Cr13 Hard Chrome Plated	1
5	Tube	AlMgSi0.5+Eloxal Plated	1
6	Nut	Galvanized Steel	1
7	Rod Seal	PU	1
8	Head O-ring	NBR	2
9	Retaining Ring	Steel	1

No	Material name	Characteristic	Pc
10	Rotary Guide	Delrin	1
11	Guide Bolt	Galvanized Steel	1
12	O-Ring	NBR	1
13	Pin	Steel	1
14	Clamping Arm	Steel	1
15	Spring Washer	AISI 304	1
16	Bolt	Galvanized Steel	1
17	Bolt	SS304+Teflon	1
18	Guiding Bush		2

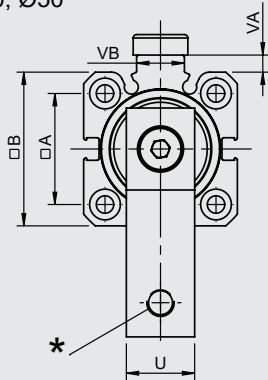
Ø20, Ø25



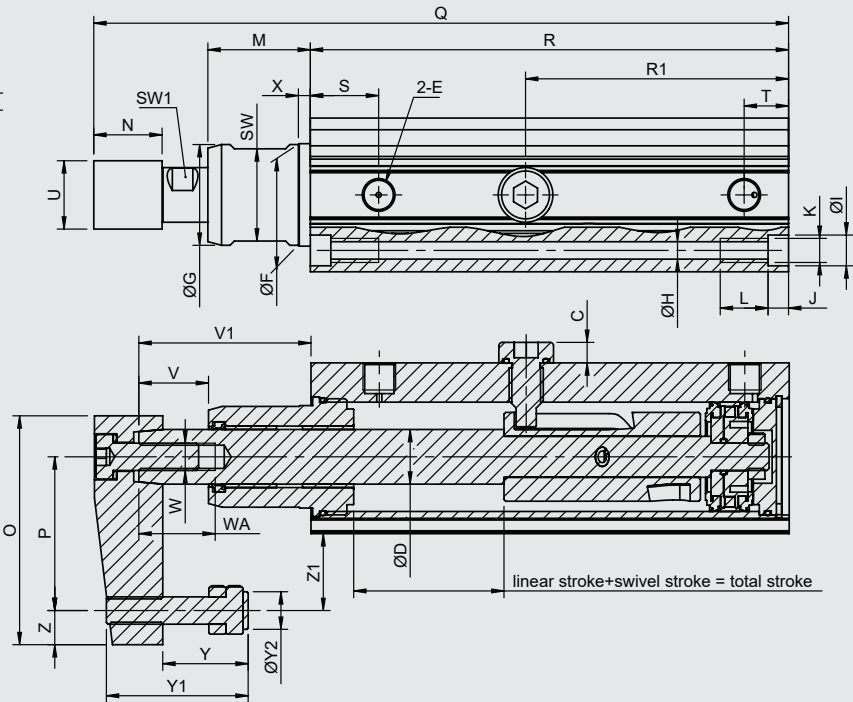
Cylinder Ø mm	*
20	M6
25	M6



Ø32, Ø40, Ø50



Cylinder Ø mm	*
32	M8
40	M8
50	M10

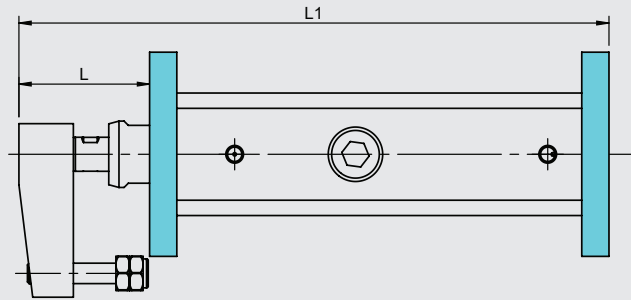
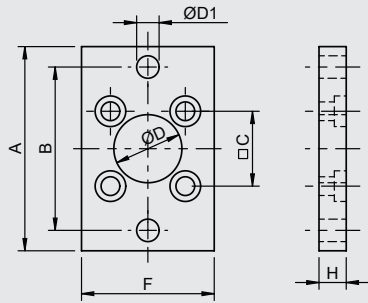


Cylinder Ø mm	Linear Stroke	Swivel Stroke	Total Stroke	A	B	C	D	E	F (h9)	G	H	I	J	K	L	M	N
20	20	15	35	22	36	6	10	M5	20	19.5	4.15	7.5	5	M5	10	20	16
25	20	17	37	26	41	6	12	M5	25	24.5	4.15	7.5	5	M5	10	25	16
32	25	19	44	32.5	45	6	16	G1/8"	30	29.5	5.1	9	6	M6	12	30	20
40	30	24	54	38	54	6	16	G1/8"	30	29.5	5.1	9	6	M6	12	30	20
50	30	30	60	46.5	64.5	6	20	G1/8"	37	36.5	6.7	11	7	M8	16	35	25

Cylinder Ø mm	O	P	Q	R	R1	S	T	U	V	V1	VA	VB	W	WA	X	Y	Y1	Y2	Z	Z1	SW	SW1
20	51	35	165.4	119	66.5	17	10	16	16.4	36.4	-	-	M6	15	2.5	10 ~ 22	35.5	8.5	7	17	17	9
25	51	35	177.4	126	70.5	17	9.5	16	16.4	41.4	-	-	M6	15	2.5	10 ~ 22	35.5	8.5	7	14.5	22	10
32	67	45	203.4	140	77	20	13	20	20.4	50.4	5	14	M8	20	3.5	12 ~ 25	41.5	11	10	22.5	27	13
40	67	45	225.9	162.5	89.5	20	12	20	20.4	50.4	6	15	M8	20	3.5	12 ~ 25	41.5	11	10	18	27	13
50	88	65	253.3	181.5	100.5	20	14	25	20.8	55.8	5.5	19	M10	20	4.5	15 ~ 40	58	14	10	42.75	32	17

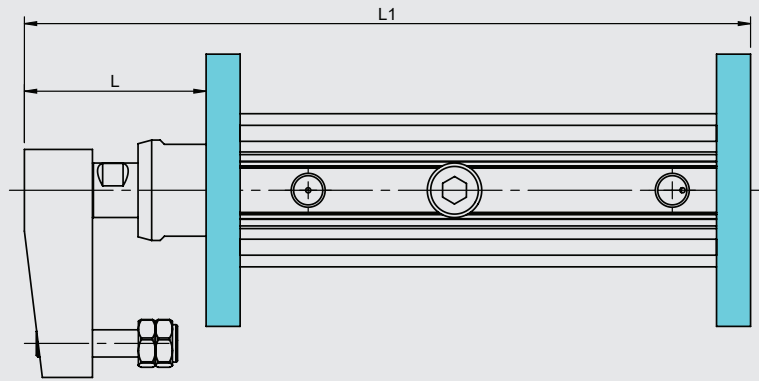
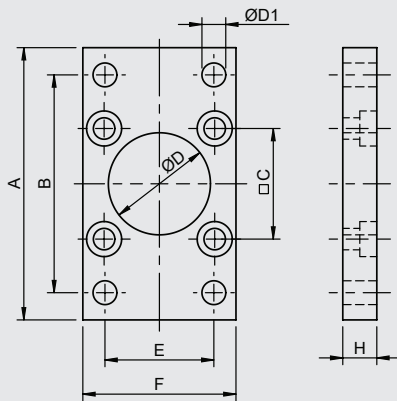
Ø20, Ø25

FLM Flange Mounting

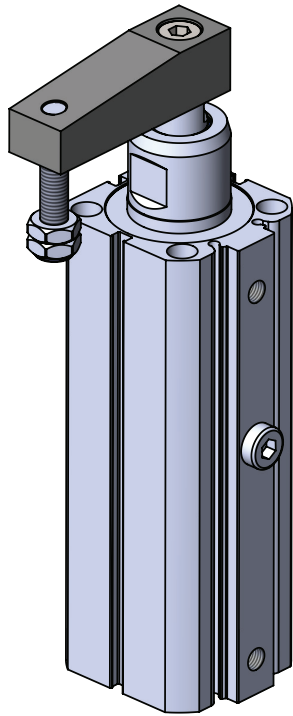


Ø32, Ø40, Ø50

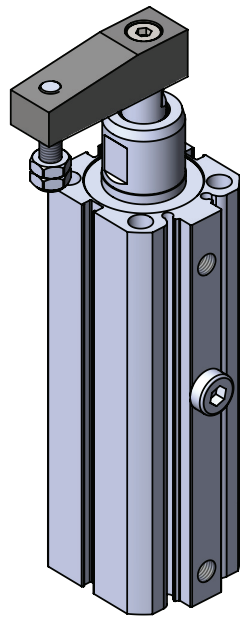
FLM Flange Mounting



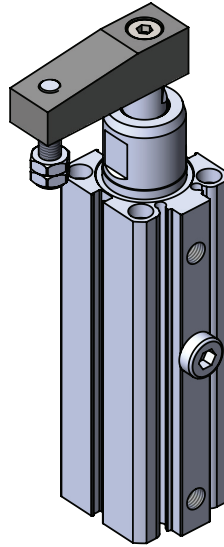
Cylinder Ø mm	A	B (JS14)	C	D (H11)	D1 (H13)	E (JS14)	F	H	L	L1
20	70	55	22	20	6.6	-	36	8	38.4	173.4
25	76	60	26	25	6.6	-	40	8	43.4	185.4
32	80	64	32.5	30	7	32	45	10	53.4	213.4
40	90	72	38	35	9	36	54	10	53.4	235.9
50	110	90	46.5	40	9	45	65	12	59.8	265.3



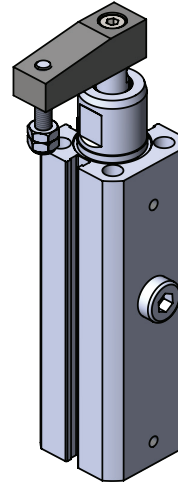
PDK Ø50



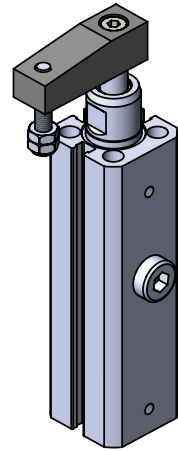
PDK Ø40



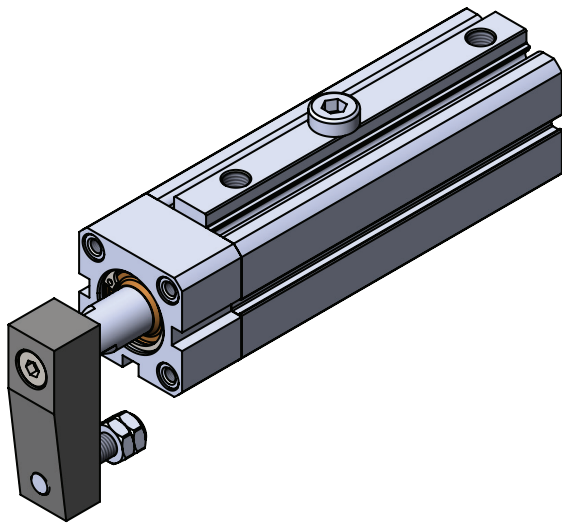
PDK Ø32



PDK Ø25



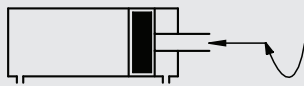
PDK Ø20



**PDK-M SERIES**  
METAL SCRAPER LINEAR-SWIVEL CLAMP CYLINDERS  
Ø20 - Ø50

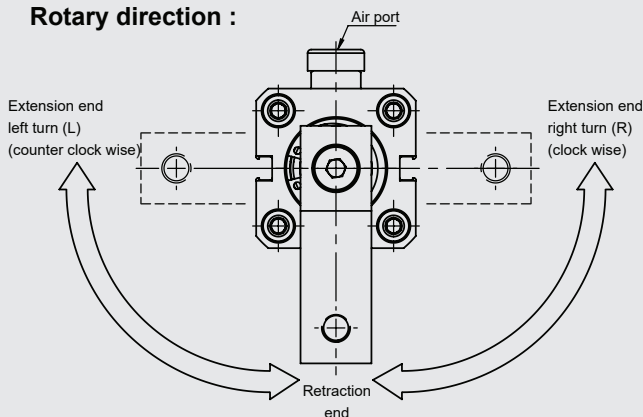
DOUBLE ACTING CYLINDER WITH MAGNETIC AND LINEAR-SWIVEL

COMPACT AND LIGHTWEIGHT BODY. ROTATION AND CLAMPING IN ONE CYLINDER. ROTATION DIRECTION MANUAL RIGHT OR LEFT CAN BE CHANGED AS REQUESTED. THE SENSOR CAN FREELY MOUNTED THE FOUR SIDES. EASY TO MONTAGE. WIDE APPLICATION AREAS.

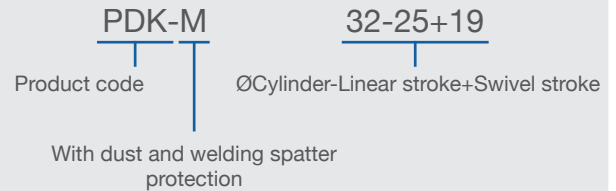


**PDK-M: DOUBLE ACTING CYLINDER WITH MAGNETIC AND LINEAR-SWIVEL**

**Rotary direction :**



**Example of order:**



**Variants from standard system:**

- M4: Extended Piston Rod
- K1: Seals for Maks. 150°C (viton)
- K4: Piston Rod Seal (viton)

**Working fluid:**

Filtered and lubricated or filtered and not lubricated air.

**Operating temperature range:**

Polyurethane (PU) : (-20°C) - (+80°C)  
Viton (FKM) : (-30°C) - (+150°C)

**Max. work pressure:**

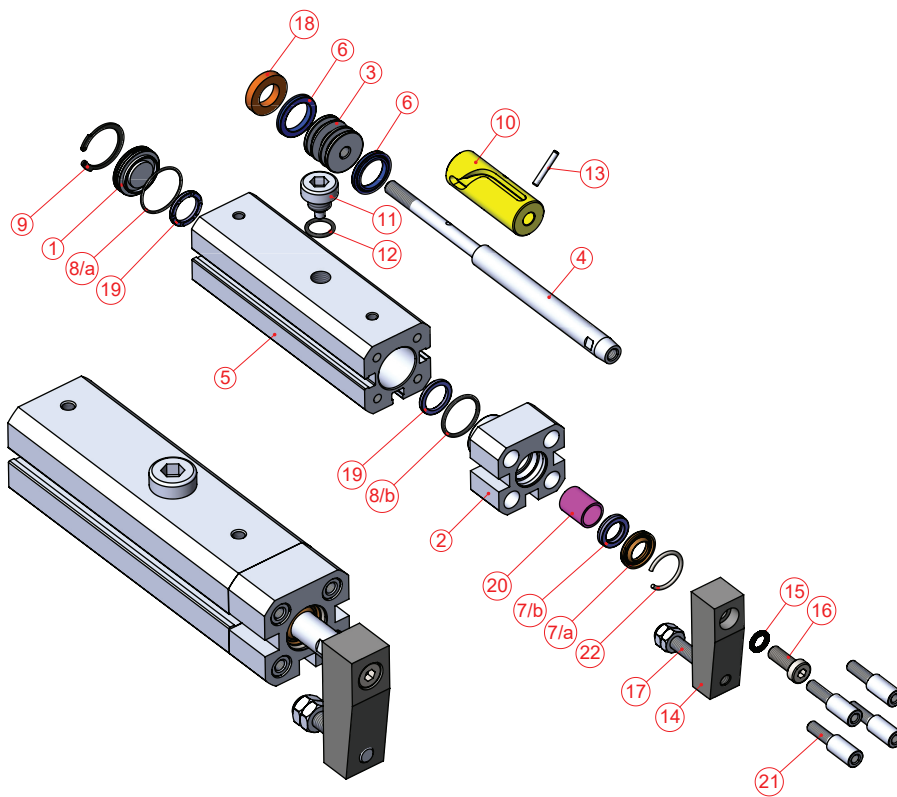
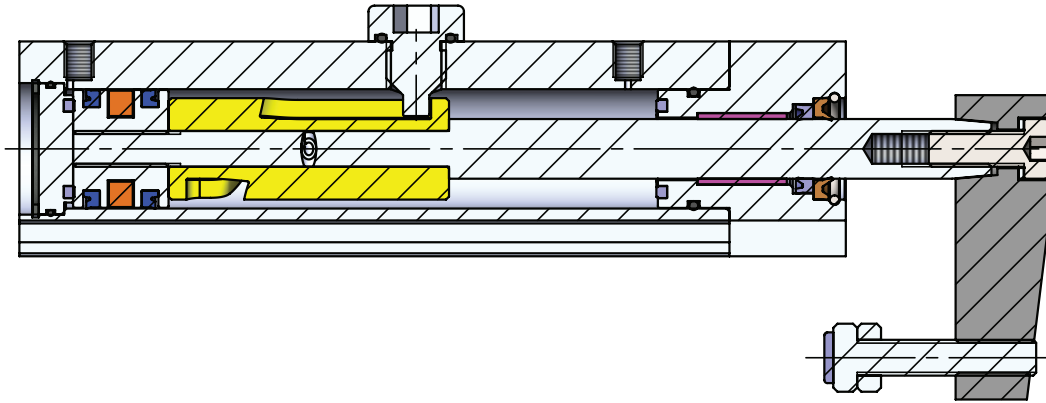
10 Bar

**Force:**

Cylinder Ø mm	Rod Ø mm	6 bar		2 bar	4 bar	6 bar
		Clamping without arm		Clamping with arm		
		Thrust Force (N)	Traction Force (N)	Effective clamping force at (N)		
20	10	170	127	35	73	109
25	12	265	227	63	127	188
32	16	482	362	111	216	313
40	16	754	633	176	355	536
50	20	1178	990	271	508	716



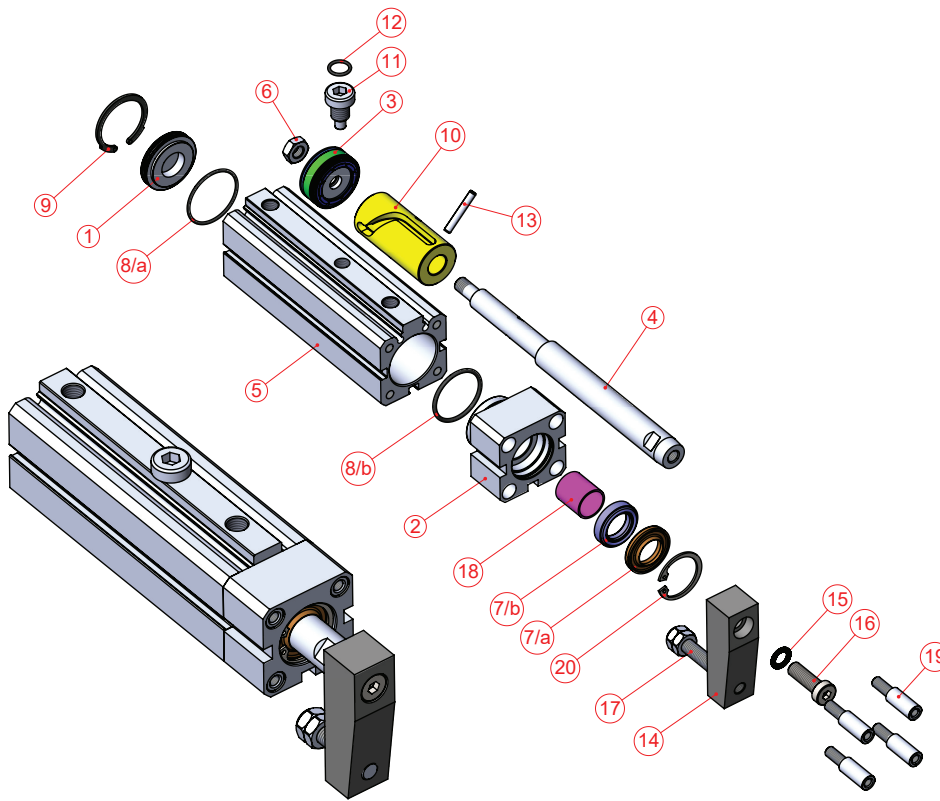
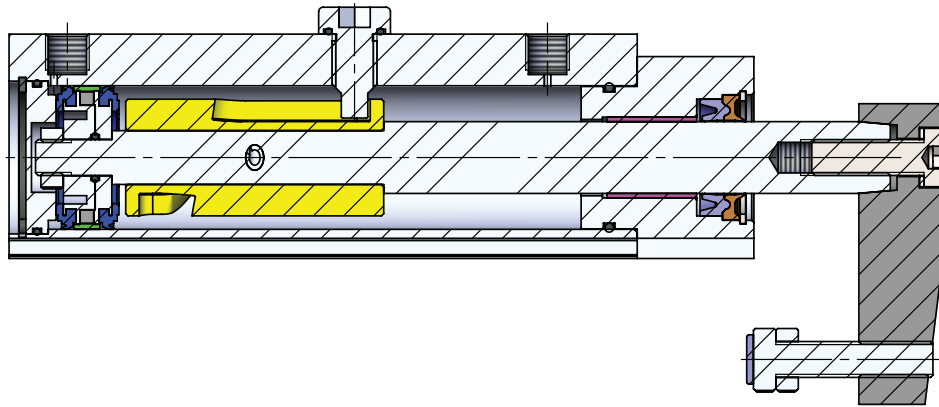
**METAL SCRAPER LINEAR-SWIVEL CLAMP CYLINDER - Ø20, Ø25**



No	Material name	Characteristic	Pc
1	Rear Head	Bronze	1
2	Front Head	6082 Al.+Eloxal Plated	1
3	Middle Piston	Brass	1
4	Piston Rod	X20Cr13 Hard Chrome Plated	1
5	Tube	AlMgSi0.5+Eloxal Plated	1
6	Piston Seal	PU	2
7	Rod Seal	Bronze+PU85	1+1
8	Head O-ring	NBR	1+1
9	Retaining Ring	Steel	1
10	Rotary Guide	Delrin	1
11	Guide Bolt	Galvanized Steel	1

No	Material name	Characteristic	Pc
12	O-Ring	NBR	1
13	Pin	Steel	1
14	Clamping Arm	Steel	1
15	Spring Washer	AISI 304	1
16	Bolt	Galvanized Steel	1
17	Bolt	SS304 + Teflon	1
18	Magnet		1
19	Bumper	PU 90	2
20	Guiding Bush	CSB-40	1
21	Bolt	Galvanized Steel	4
22	Retaining Ring	Steel	1

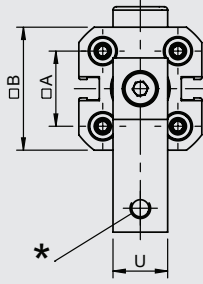
METAL SCRAPER LINEAR-SWIVEL CLAMP CYLINDER - Ø32, Ø40, Ø50



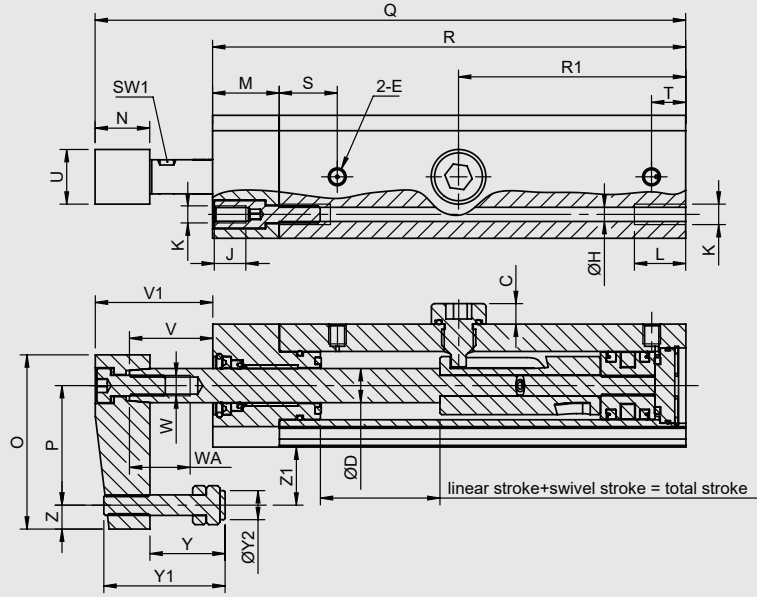
No	Material name	Characteristic	Pc
1	Rear Head	For Ø32 Cyl., Bronze	1
		For Ø40, Ø50 Cyl., 6082 Al.+Eloxal Plated	1
2	Front Head	6082 Al.+ Eloxal Plated	1
3	Middle Piston	PU+Al.+POM+Magnet	1
4	Piston Rod	X20Cr13 Hard Chrome Plated	1
5	Tube	AlMgSi0.5+Eloxal Plated	1
6	Nut	Galvanized Steel	1
7	Rod Seal	Bronze+PU85	1+1
8	Head O-ring	NBR	1+1
9	Retaining Ring	Steel	1
10	Rotary Guide	Delrin	1

No	Material name	Characteristic	Pc
11	Guide Bolt	Galvanized Steel	1
12	O-Ring	NBR	1
13	Pin	Steel	1
14	Clamping Arm	Steel	1
15	Spring Washer	AISI 304	1
16	Bolt	Galvanized Steel	1
17	Bolt	SS304+Teflon	1
18	Guiding Bush	CSB-40	1
19	Bolt	Galvanized Steel	4
20	Retaining Ring	Steel	1

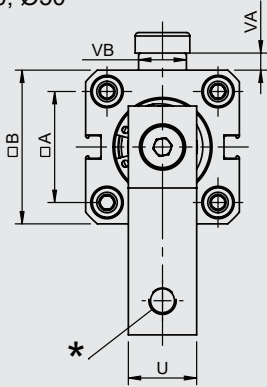
Ø20, Ø25



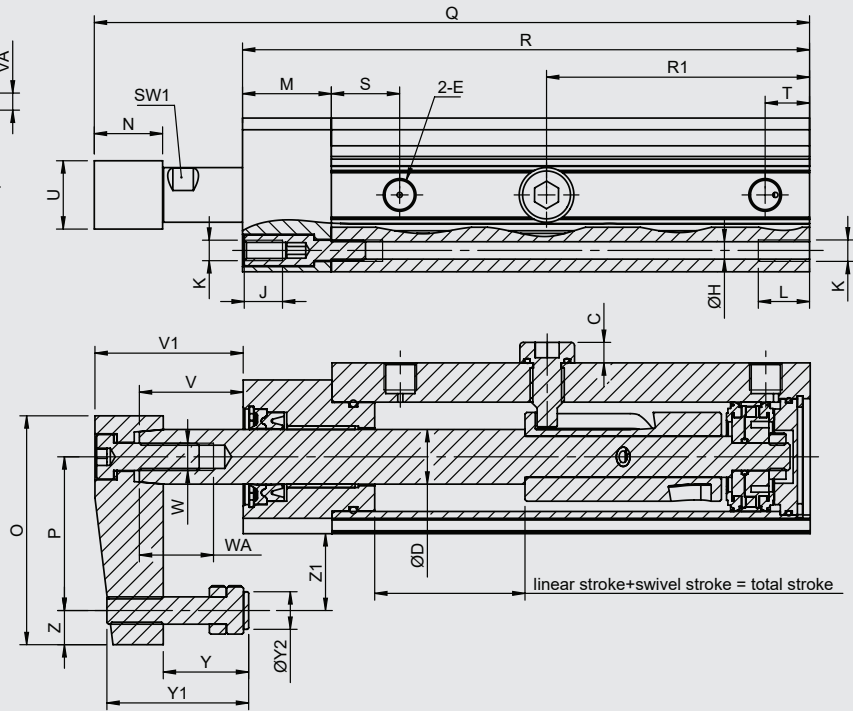
Cylinder Ø mm	*
20	M6
25	M6



Ø32, Ø40, Ø50



Cylinder Ø mm	*
32	M8
40	M8
50	M10

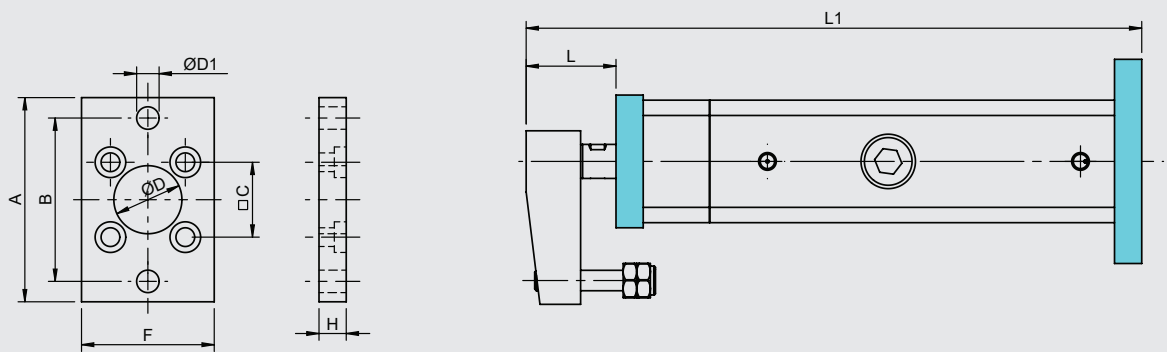


Cylinder Ø mm	Linear Stroke	Swivel Stroke	Total Stroke	A	B	C	D	E	H	J	K	L	M	N
20	20	15	35	22	36	6	10	M5	4.15	9	M5	15	19.5	16
25	20	17	37	26	41	6	12	M5	4.15	9	M5	15	20	16
32	25	19	44	32.5	45	6	16	G1/8"	5.1	10	M6	18	26	20
40	30	24	54	38	54	6	16	G1/8"	5.1	10	M6	18	26	20
50	30	30	60	46.5	64.5	6	20	G1/8"	6.7	12	M8	20	30	25

Cylinder Ø mm	O	P	Q	R	R1	S	T	U	V	V1	VA	VB	W	WA	Y	Y1	Y2	Z	Z1	SW1
20	51	35	172.9	138.5	66.5	17	10	16	24.4	34.4	-	-	M6	15	10 ~ 22	35.5	8.5	7	17	9
25	51	35	180.4	146	70.5	17	9.5	16	24.4	34.4	-	-	M6	15	10 ~ 22	35.5	8.5	7	14.5	10
32	67	45	209.4	166	77	20	13	20	30.4	43.4	5	14	M8	20	12 ~ 25	41.5	11	10	22.5	13
40	67	45	231.9	188.5	89.5	20	12	20	30.4	43.4	6	15	M8	20	12 ~ 25	41.5	11	10	18	13
50	88	65	260.3	211.5	100.5	20	14	25	32.8	48.8	5.5	19	M10	20	15 ~ 40	58	14	10	42.75	17

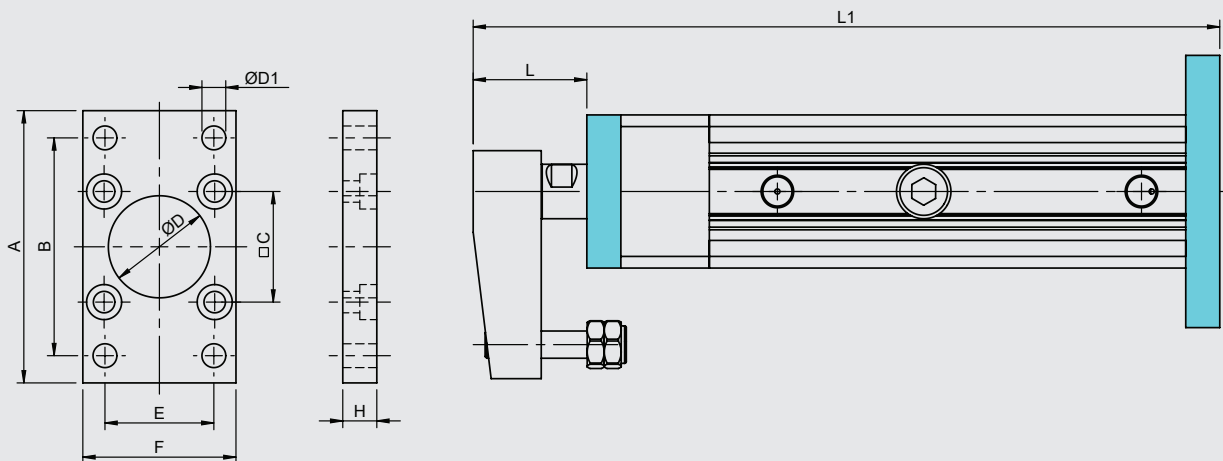
Ø20, Ø25

FLM Flange Mounting

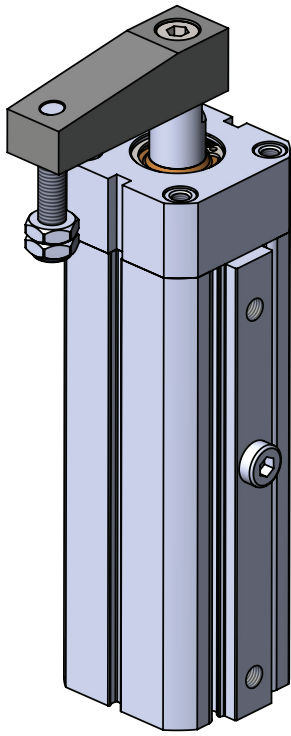


Ø32, Ø40, Ø50

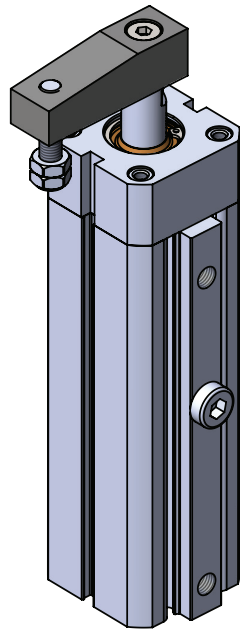
FLM Flange Mounting



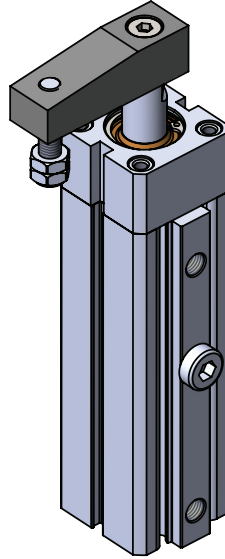
Cylinder Ø mm	A	B (JS14)	C	D (H11)	D1 (H13)	E (JS14)	F	H	L	L1
20	70	55	22	20	6.6		36	8	26.4	180.9
25	76	60	26	25	6.6		40	8	26.4	188.4
32	80	64	32.5	30	7	32	45	10	33.4	219.4
40	90	72	38	35	9	36	54	10	33.4	241.9
50	110	90	46.5	40	9	45	65	12	36.8	272.3



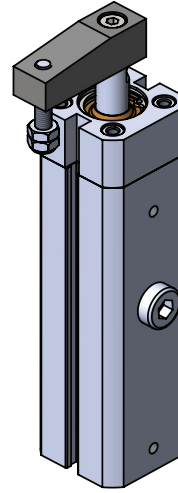
PDK-M Ø50



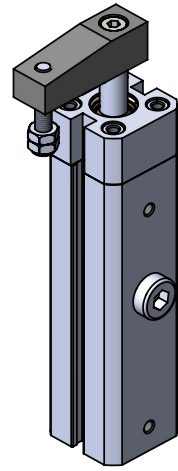
PDK-M Ø40



PDK-M Ø32



PDK-M Ø25



PDK-M Ø20

Dudullu OSB Mahallesi İMES-102. Sok. A Blok No:11/15 Ümraniye / İstanbul / Turkey  
Tel: +90 216 364 3076 pbx - Fax: +90 216 466 6305  
[www.pemaks.com.tr](http://www.pemaks.com.tr) - [pemaks@pemaks.com.tr](mailto:pemaks@pemaks.com.tr)

