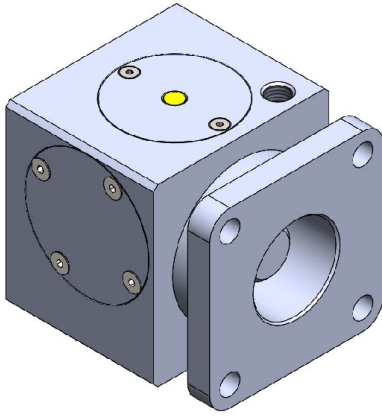


MK SERIES

**2020** CATALOGUE

 **Pemaks**<sup>®</sup>  
Pneumatics  
pemaks.com.tr



## MK - ROD LOCK UNIT

Ø32...Ø125

Rod locking unit is used by mounting on pneumatic cylinders in accordance with ISO 15552 standard. This unit ensures that the piston shaft is locked and the load connected to the piston end remains constant if the signal is interrupted during the piston movement. When the signal is given to the shaft locking unit, the piston can continue its standard motion.

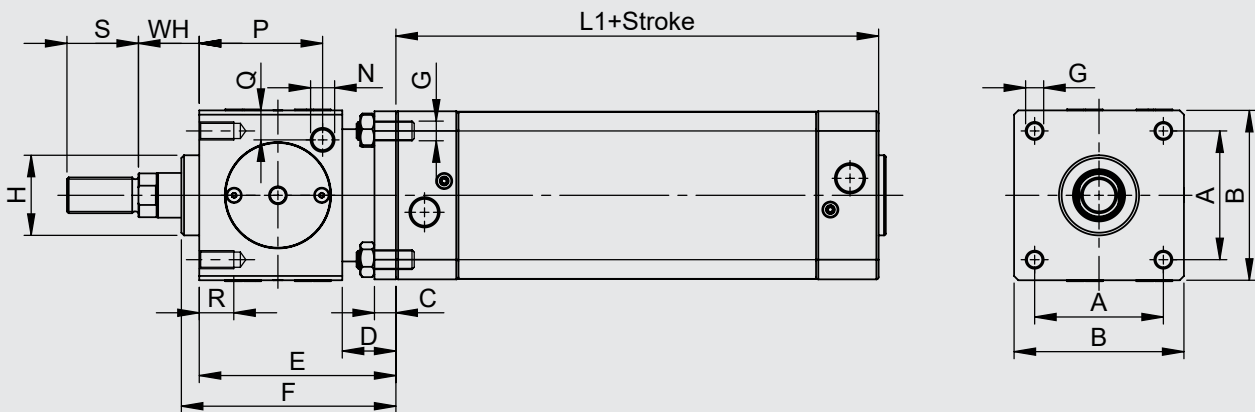
### ROD LOCK UNIT FORCE VALUES

Cylinder Ø	MK-32	MK-40	MK-50	MK-63	MK-80	MK-100	MK-125
Force (N)	790	1240	1930	3060	5400	7700	12040

### TECHNICAL DATA

Cylinder / Ø mm	Ø32-Ø40-Ø50-Ø63-Ø80-Ø100-Ø125
Cylinder Rod / Ø tolerance	f7
Fluid	Lubricated and not lubricated air
Operating Pressure	3 - 6 bar
Temperature Range	-50° / +80C°
Lock Type	Mechanical-bilateral
Non- Pressure	Locked

### ROD LOCK UNIT DIMENSIONS



Rod Lock Unit Ø mm	A	B	C	D	E	F	G	H	N	P	Q	R	T	WH	S	L1	Rod Lock Unit Mass / Kg
32	32,5	47	6	20	60	67,5	M6	30	G1/8"	33,25	9	8	60	26	22	94	0,4
40	38	54	6	20	70	80	M6	34,9	G1/8"	42,5	9	8	70	30	24	105	0,6
50	46,5	65	8	24	90	100	M8	40	G1/8"	58	12,5	12	90	37	32	106	1,1
63	56,5	75	8	24	90	100	M8	45	G1/8"	59	17,5	12	90	37	32	121	1,5
80	72	95	12	32	110	120	M10	45	G1/4"	69	17,5	16	110	46	40	128	2,6
100	89	114	12	32	110	120	M10	55	G1/4"	69	20	16	110	51	40	138	3,5
125	110	138	20	45	140	156	M12	60	G1/4"	84,5	19	20	140	65	54	160	6,5

NOTE: To install the locking unit on the cylinder, it is necessary to add the dimension "T" in the table to the shaft length. Please take this measure into consideration when ordering a cylinder.



Dudullu OSB Mahallesi İMES-102. Sok. A Blok No:11/15 Ümraniye / İstanbul / Turkey  
Tel: +90 216 364 3076 pbx - Fax: +90 216 466 6305  
[www.pemaks.com.tr](http://www.pemaks.com.tr) - [pemaks@pemaks.com.tr](mailto:pemaks@pemaks.com.tr)

