

1170 DOUBLE FLANGED BUTTERFLY VALVE

Type 1170 Double flanged valve is used in all general purpose operations also can be used as a stopper and tap for discharging at the ends of pipe lines. With its flanges it permits to install to the line flange or easy uninstallation of the line.

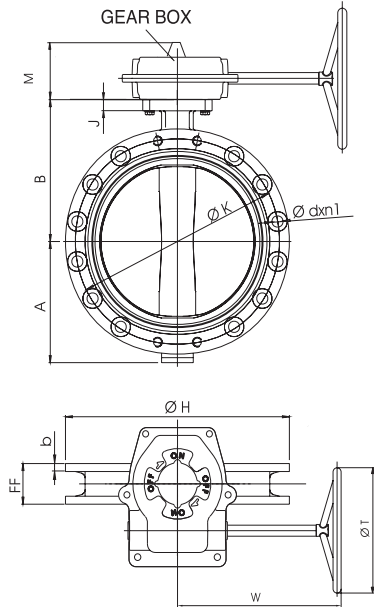
Valve Type	: Double Flanged Butterfly Valve
DN/ANSI	: DN 250 - DN 1200 10" - 48"
Working Pressure	: PN 6, PN 10
Flange Connection	: PN 6, PN 10
Top Flange	: ISO 5211
Marking	: EN 19
Face-to-Face	: EN 558-1/20
Test Standard	: EN 12266-1



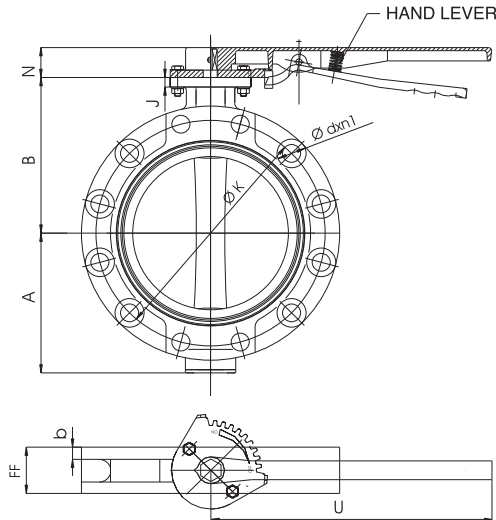
*Please contact us for other sizes, pressures and flange connections.

1170 Double Flanged Butterfly Valve Dimensional Drawing

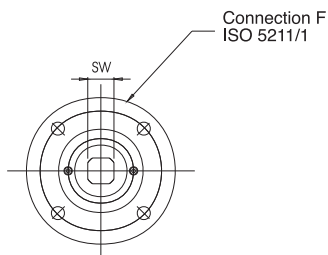
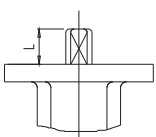
DN 250 - 1200



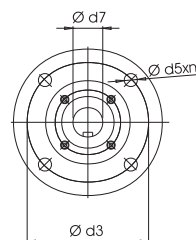
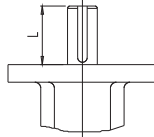
DN 250 - 300



DN 250 - 300

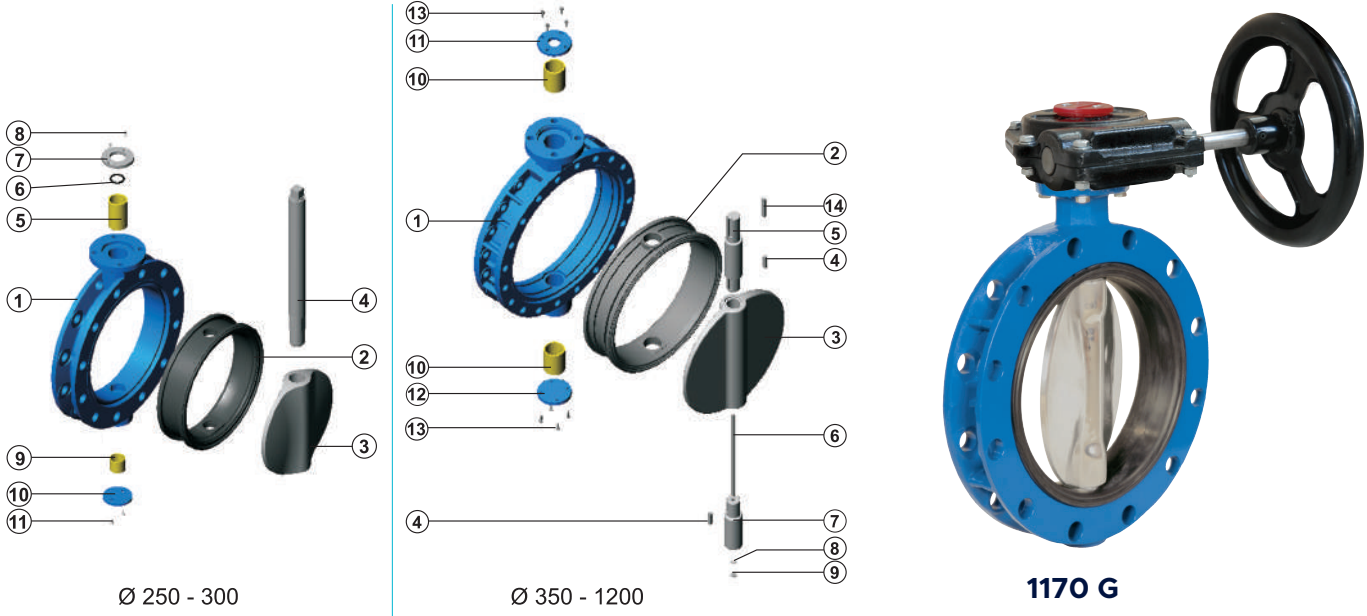


DN 350 - 1200



DN	A	B	b	FF	ØH	J	M	N	U	W	ØT	F	Ød5xn	SW	L	Ød3	PN 10		PN 16		FREE SHAFT Weight (kg)	HAND LEVER		GEAR BOX			
																	ØK	Ød	n1	ØK		Ød	n1	Type	Weight (kg)	Type	Weight (kg)
Ø 250	212	245	22	68	400	15	75	47	400	238	260	10	11x4	22	32	102	350	Ø 26	12	355	Ø 26	12	40.0	92-400	93-200	7.5 GG	
Ø 300	243	282	24.5	78	455	15	75	47	400	238	260	10	11x4	27	32	102	400	Ø 26	12	410	Ø 26	12	46.0	92-400	93-200	7.5 GG	
Ø 350	300	318	26.5	78/92	515	28	102	-	-	315	400	14	17.5x4	Ø 36	75	140	460	Ø 22	16	470	Ø 26	16	55.0	-	93-300	-	-
Ø 400	326	362	28	102	575	28	102	-	-	315	400	14	17.5x4	Ø 36	75	140	515	Ø 26	16	525	Ø 30	16	81.0	-	93-300	-	-
Ø 450	365	410	30	114	635	26	102	-	-	315	400	16	22x4	Ø 45	92	165	565	Ø 26	20	585	Ø 30	20	140.0	-	93-300	-	-
Ø 500	408	435	31.5	127	710	26	102	-	-	315	550	16	22x4	Ø 45	92	165	620	Ø 26	20	650	Ø 33	20	150.0	-	93-300	-	-
Ø 600	482	519	36	154	835	26	102	-	-	315	600	16	22x4	Ø 60	92	165	725	Ø 30	20	770	Ø 36	20	201.0	-	93-300	-	-
Ø 700	564	548	39.5	165	905	32	135	-	-	414	700	25	18x8	Ø 68	118	254	840	Ø 30	24	840	Ø 36	24	292.0	-	93-400	-	-
Ø 800	587	587	43	180/190	1020	35	135	-	-	414	800	25	18x8	Ø 80	118	254	960	Ø 33	24	950	Ø 39	24	365.0	-	93-400	-	-
Ø 900	655	661	46.5	190/203	1115	35	225	-	-	525	550	30	22x8	Ø 80	200	298	1050	Ø 33	28	1050	Ø 39	28	506.0	-	-	-	-
Ø 1000	718	751	50	216	1255	35	225	-	-	525	550	30	22x8	Ø 100	200	298	1160	Ø 37	28	1170	Ø 43	28	700.0	-	93.500	211.0 GG	-
Ø 1200	985	1005	57	254	1330	40	225	-	-	525	550	30	22x8	Ø 100	200	298	1380	Ø 40	32	1390	Ø 49	32	1.400.0	-	-	-	-

Part List & Material Specification



Ø 250-300

P.NO	PART NAME	MATERIAL
1	Body	GG 25, GGG 40-50, GGG 40.3, Al-Bz AISI 316, GS-C25
2	Body seat	EPDM, NBR, Viton, Hypalon Neopren, NR, Silicone
3	Disc	AISI 316, Al-Bz, GGG 40-50, GS-C25, UB 6
4	Stem	AISI 304, AISI 316, AISI 420
5	Bearing	SB (Carbon Steel + PTFE)
6	O-Ring	NBR
7	Washer	St-37, A-2
8	Bolt	8.8, A-2
9	Bearing	SB (Carbon Steel + PTFE)
10	Lower Cover	St-37
11	Bolt	8.8, A-2

Ø 350-1200

P.NO	PART NAME	MATERIAL
1	Body	GG 25, GGG 40-50, GGG 40.3, Al Bz, AISI 316, GS-C25
2	Body seat	EPDM, NBR, Viton, Hypalon Neopren, NR, Silicone
3	Disc	AISI 316, Al-Bz, GGG 40-50, GS-C25, UB 6
4	Key	C 45 k
5	Upper stem	AISI 304, AISI 316, AISI 420
6	Connecting stud	AISI 304, AISI 316, AISI 420
7	Lower stem	AISI 304, AISI 316, AISI 420
8	Washer	St-37, A-2
9	Nut	6.8, A-2
10	Bearing	SB (Carbon Steel + PTFE)
11	Upper cover	C 45
12	Lower cover	C 45
13	Bolt	8.8, A-2
14	Key	C 45 k



1170 E

Firmamızın ölçülerde değişiklik yapma hakkı saklıdır.
Diğer ölçüler ve malzeme çeşitleri için üreticiye başvurunuz.