

Electro - Pneumatic and Pneumatic - Pneumatic Positioner



TORK-SS2R Smart Positioner
HART Communication

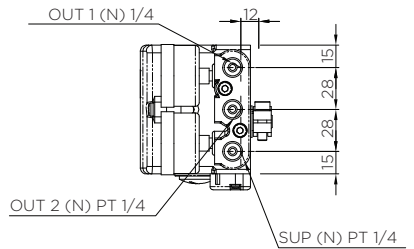
- Easy maintenance
- For rotary actuators
- Vibration resistance
- Linearity: %1.5
- Body: Aluminium injection
- Protection Class: Exmd II BT5(05 ATEX 1076x)
- Optional: Exmd II BT5, Ex ia IIBT6
- Stainless manometer standard

APPLICATION

For pneumatic actuated valves
proportional control



TORK-EPR Electromechanic
Positioner (Rotary) TORK-EPL
Electromechanic Positioner
(Lineer)

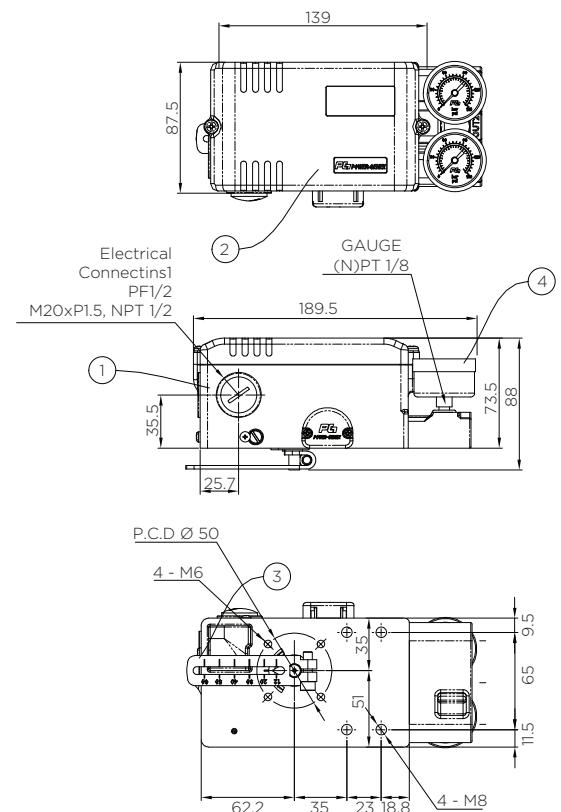


- Input Signal: 3-15 psi (0.2-1.0bar)
- Supply Pressure: 6 -7 bar

TORK-PP.R
Pneumatic Pneumatic
Rotary Type Positioner



TORK-EPR
Electro - Pneumatic Positioner



Electro - Pneumatic Positioner

TYPE	INPUT SIGNAL and AIR SUPPLY PRESSURE	PROTECTION CLASS	BRACKET	BODY	AIR CONSUMPTION	WEIGHT
TORK-EPR	mA/bar	I/P66	Namur		LPM	(kg)
TDRK-EP.R Rotary	4-20 mA / max. 7 bar	I/P 66	80x30	Aluminium Die Cast	5 LPM (1.4 Kgf / cm ²)	2.9
TDRK-EPL Lineer	4-20 mA / max. 7 bar	I/P 66	80x30	Aluminium Die Cast	5 LPM (1.4 Kgf/cm ²)	2.9
TORK-SS.2R Rotary	4-20 mA / max. 7 bar	I/P 66	80x30	Aluminium Die Cast	2 LPM (1.4 Kgf/cm ²)	2.5
TDRK-SS.2L Lineer	4-20 mA / max. 7 bar	I/P 66	80x30	Aluminium Die Cast	2 LPM (1.4 Kgf/cm ²)	2.5

Pneumatic- Pneumatic Positioner

TYPE	INPUT SIGNAL and AIR SUPPLY PRESSURE	REPEATABILITY	BRACKET	BODY	AIR CONSUMPTION	WEIGHT
TORK-EPR	mA/bar	%F.S	Namur		LPM	(kg)
TDRK-PP.R Rotary	3-15 psi / max. 7 bar	With in ± 05 % F.S	80x30	Aluminium Die Cast	5 LPM (1.4 Kgf / cm ²)	2.1
TDRK-PP.L Lineer	3-15 psi / max. 7 bar	With in ± 05 % F.S	80x30	Aluminium Die Cast	5 LPM (1.4 Kgf/cm ²)	2.1